



Discharge Consent (068/12/3) Reporting

December 2018 to February 2019

Author

██████████ – Dalradian Gold Ltd

Date

29th March 2019

TABLE OF CONTENTS

1.0 Introduction	1
2.0 Summary of operations during the reporting period	1
3.0 Sampling locations, protocol and laboratories	1
4.0 Results	3
4.1 Quality Assurance/Quality Control	3
4.1.1 Chain of Custody and confirmation of parameter analysis	3
4.1.2 Holding times	3
4.1.3 Field Blanks	3
4.1.4 Duplicate Samples	4
4.1.5 Laboratory internal QA/QC	4
4.1.6 Summary	4
4.2 Factual Presentation of Data	5

Appendix A – Presentation of Water Quality Results

Appendix B – Laboratory Certificates

Appendix C – YSI MultiParameter Meter Calibration Certificate

1.0 INTRODUCTION

This report has been prepared by Dalradian Gold Ltd. (DGL) in response to Condition 1.I. of Discharge Consent 068/12/3, which requires quarterly water quality reporting. The consent relates to discharge of site drainage water (at Irish Grid Reference H 5707 8690) arising from the DGL advanced exploration project at Curraghinalt. The site is situated approximately 8 km to the east of the village of Gortin, County Tyrone, Northern Ireland, BT79 7SF.

2.0 SUMMARY OF OPERATIONS DURING THE REPORTING PERIOD

DGL have progressed advanced exploration at the Curraghinalt site. The work progressed under Planning Permission K/2014/0246/F, and has been aimed at collecting information that will support a Feasibility Study and an Environmental Impact Assessment to allow for development of a full mine.

Water discharged via the consent during the reporting period has derived from natural groundwater drainage to the exploration adit and runoff water from various components of the site that has resulted from incident rainfall. Following capture and management of these sources, treatment prior to discharge at the consent location has included passage through a settlement tank, oil interceptor, lamella clarifier (for further sediment removal), and a pH adjustment tank.

DGL informed the Northern Ireland Environment Agency (NIEA) of the intention to commence the site discharge on 3rd December 2014. This document represents the 17th quarterly discharge consent report.

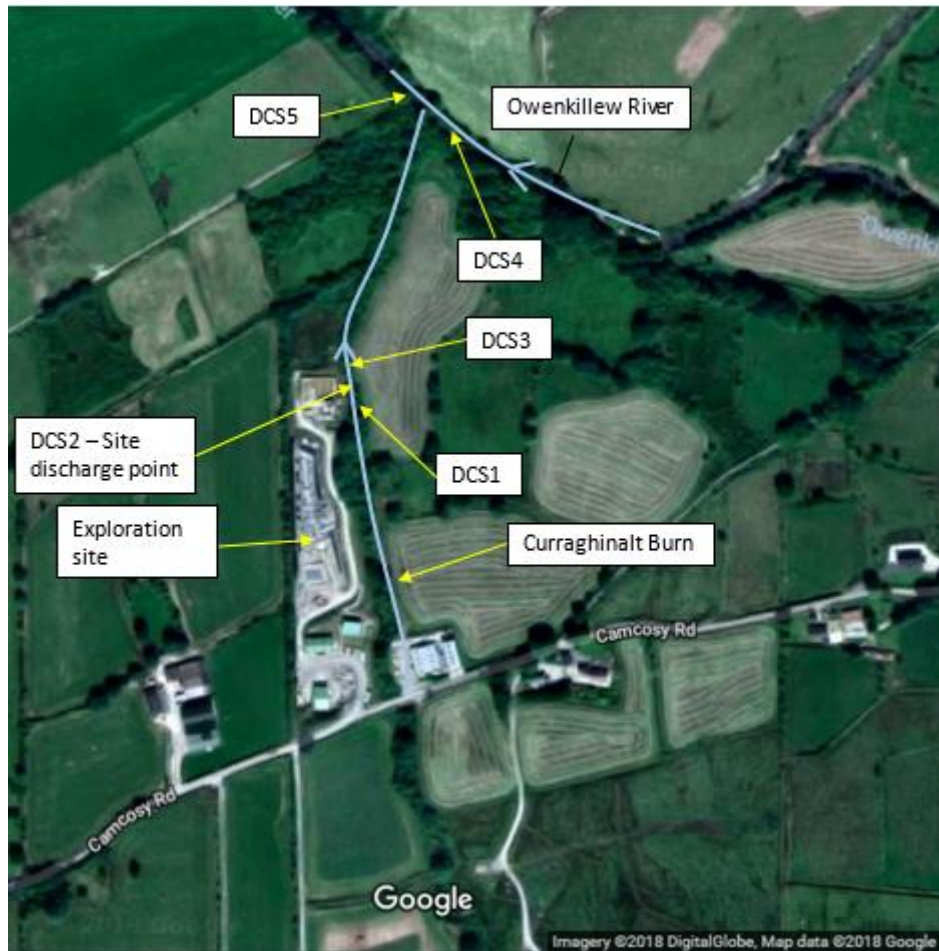
3.0 SAMPLING LOCATIONS, PROTOCOL AND LABORATORIES

Five surface water sample locations are required to be sampled monthly as part of the Discharge Consent. These have been listed below as Discharge Consent Sample 1 (DCS1) to Discharge Consent Sample 5 (DCS5) and are also presented on Figure 1.

- DCS1 - Immediately upstream of the confluence of the site discharge point and Curraghinalt Burn;
- DCS2 - Site discharge point;
- DCS3 - 5 m downstream of the confluence of the site discharge point and Curraghinalt Burn;
- DCS4 - Immediately upstream of the confluence of Curraghinalt Burn and the Owenkillew River; and
- DCS5 - 5 m downstream of the confluence of the Curraghinalt Burn and the Owenkillew River.

DGL has also added 2 more samples as part of QA/QC. The sample ID's are:

- DCS6 – a blank sample consisting of deionised water; and
- DCS7 – a duplicate of any sample between DCS1 and DCS5.



**Figure 1:
Site map (Google Maps) showing discharge consent sample locations**

All surface water samples are collected according to protocols described in the DGL Surface Water Sampling Procedure¹. To help ensure quality results, care is taken not to disturb stream bed sediments upstream of the sampling point and prior to sampling. Samples are collected at all locations by a DGL Field Technician wearing a fresh pair of nitrile gloves and from the flowing stream of water to minimise any risks of contamination. All sample bottles are laboratory supplied and are filled to capacity at source.

In accordance with best practice, field filtration for dissolved parameters is undertaken on site using a syringe and attached 0.45µm filter, and these samples are associated with a nitric acid (HNO₃) preservative to thereafter stabilise dissolved metals in solution. All laboratory analytical services during the quarter, including supplementary Quality Assurance/Quality Control (QA/QC) testing, have been provided by [REDACTED].

Samples are placed in a cooler with ice, secured with sample packaging and accompanied by a completed Chain of Custody (CoC) Form, and shipped directly to [REDACTED] in [REDACTED] for analysis. [REDACTED] are accredited by the United Kingdom Accreditation Service (UKAS) to 17025 standard, and UKAS monitor and externally audit the laboratory.

DGL have also been working to include the measurement of pH in the field at each sample location. Regular calibration of the instrument used is undertaken on site using both pH 4.01 and pH 7.01 buffer

¹ Dalradian Gold Ltd. 2013 & 2015. Surface Water Sampling Procedure.

solutions and in accordance with DGL MultiParameter Meter Calibration Procedure². During readings, the pH probe is fully immersed at all times in the flowing stream of water and up until stabilisation occurs³.

4.0 RESULTS

During this reporting period DGL have collected a total of 3 rounds of water samples from the discharge consent locations. This number of samples meets that required by the consent during the period. Sampling was undertaken on the 3rd of December 2018, 10th of January and the 4th of February 2019.

QA/QC checks and factual reporting against the consent water quality thresholds for the discharge point are presented in the following sub-sections. Water quality results and thresholds are summarised in Appendix A, and all laboratory certificates are presented in Appendix B.

4.1 Quality Assurance/Quality Control

A number of QA/QC measures have been applied to water samples taken at all sites. A factory calibrated certificate for the YSI Professional Series Multiparameter probe used to measure pH in the field is provided in Appendix C.

4.1.1 Chain of Custody and confirmation of parameter analysis

A chain of custody (CoC) form was completed on each day of sampling. The CoC forms document possession of the samples from the time of sample collection to reception at the lab; provide primary instruction to the lab on the parameters to be analysed; and provide sample information relevant to the lab, such as sample name and sample date and time. Following each sampling event and prior to submission to the lab, the CoC was reviewed and checked for errors. In the events covered within the period there are no issues to report in this respect.

4.1.2 Holding times

In order to ensure holding times were not exceeded, DGL shipped samples directly to the laboratory. Certificates presented in Appendix B demonstrate that all samples were received by [REDACTED] the next day after sampling. Testing is recorded on CoC forms to have been scheduled for a standard 10 day turnaround time on all occasions.

4.1.3 Field Blanks

A total of three field blanks have been collected during the reporting period to assess potential contamination due to the sampling environment (e.g., dust getting into the sample bottle). Analysis of field blanks was undertaken by the laboratory alongside the specified water chemical analysis. Field blank results include total ambient conditions during sampling, but can also potentially incorporate bias due to laboratory methods (e.g., low-level constituents remaining in analytical equipment from a prior highly contaminated sample from another site) that are assessed by laboratory method blanks. The field blanks incorporated deionised water which theoretically should return no measurable values throughout the parameters analysed (with the omission of pH) unless there has been a source of contamination during sampling. All determinants in three blank samples were below laboratory detection limits.

² Dalradian Gold Ltd. 2013 & 2015. MultiParameter Meter Calibration Procedure.

³ Dalradian Gold Ltd. 2013 & 2015. MultiParameter Meter Sampling Procedure.

4.1.4 Duplicate Samples

Three duplicate samples were collected during the reporting period, and all from the discharge point (DCS2). Analysis of all duplicate samples was undertaken by [REDACTED] and therefore alongside the remaining batch.

The measure of the reproducibility or precision of the chemical analysis has been quantified by calculating the Relative Percentage Difference (RPD) between parameter concentrations on the split sample submitted as a blind duplicate. The RPD has been calculated as follows:

$$RPD\% = \frac{|S - D|}{\frac{1}{2}(S + D)} \times 100$$

Where:

RPD = Relative Percentage Difference

S = Sample value of parameter; and

D = Duplicate value of parameter

Theoretically, duplicate samples should have identical chemical concentrations (i.e., RPD = 0). However, due to factors such as sample matrix heterogeneity, natural variations or variations due to sample collection, handling or analysis, a variation in chemical concentration may occur (i.e., RPD greater than 0).

It should be noted that the reproducibility of replicate analyses at concentrations near the method detection limit (MDL) can be poor, resulting in RPD values of greater than the desirable limits. Therefore, for duplicate concentrations greater than five times the detection limit, a relative percent difference value of $\pm 20\%$ is considered acceptable⁴. Given these considerations, for duplicate concentrations less than five times the detection limit, RPD has not been calculated.

An RPD value greater than the above project objectives suggests variability has been introduced through sample collection, sample handling, or sample analysis. Of the analysis undertaken the zinc concentration on the 4th February only was found to be outside the acceptable RPD.

4.1.5 Laboratory internal QA/QC

[REDACTED] report data only if the laboratory is confident that the results are a true reflection of the samples analysed, and data is only reported as accredited when all the requirements of their Quality System have been met. Any failure in the Quality System is fully investigated and documented as deviating samples on certificates issued. If samples are received in a condition inappropriate to the requested analyses, for example if they are dispatched in inappropriate containers or at a temperature not commensurate with the requested analysis, any test results that may be compromised will be highlighted in a deviating samples report.

On all laboratory certificates returned, all samples sent for analysis were scheduled upon receipt. No deviating samples were found during this sampling period.

4.1.6 Summary

As detailed above, there are no major QA/QC concerns regarding the dataset presented. Duplicate and blank samples collected also indicate a high level of data quality.

⁴ Zeiner, S.T. 1994. Realistic Criteria for the Evaluation of Field Duplicate Field Results. Proceedings of Superfund XV, November 29-December 1, 1994. Sheraton Washington Hotel, Washington, D.C.

4.2 Factual Presentation of Data

All water quality results are presented in summary for each location in Appendix A. This includes a comparison of concentrations from the discharge point location (DCS2) against specific threshold values detailed within the consent.

During the reporting period, all three sample results from DCS2 are below the threshold values presented within the consent for all parameters.

Water quality obtained from the Curraghinalt Burn during the period can be summarised as follows:

- Total suspended solids were below detection (<10 mg/L) in all cases;
- BOD concentrations varied from below detection (<1 mg/L) to 1 mg/L;
- Laboratory measured pH varies between a minimum of 6.08 pH units (recorded at the upstream location) and a maximum of 7.81 pH units (recorded at the downstream location);
- Dissolved zinc concentrations varied between a minimum concentration of 5.7 µg/L found at the upstream location and 40.5 µg/L found at the downstream location;
- Dissolved arsenic concentration ranged from below detection at <0.9 µg/L to a maximum of 3.4 µg/L at the upstream location;
- Dissolved lead concentrations were below detection at <0.4 µg/L in all cases;
- Oil or grease has not been visible at the sample locations;
- The maximum dissolved iron concentration has been determined at 1.727 mg/L at the upstream location; and
- The maximum total hardness has been recorded as 83 mg/L at the downstream location.

Water quality obtained from the Owenkillew River during the period can be summarised as follows:

- Total suspended solids ranged from below detection (<10 mg/L) to a maximum concentration of 18 mg/L at the upstream location;
- BOD concentrations varied from below detection (<1 mg/L) to 1 mg/L;
- Laboratory measured pH varies between a minimum of 6.12 pH units (recorded at the downstream location) and a maximum of 7.91 pH units (recorded at the upstream location);
- Oil or grease has not been visible at the sample locations;
- The maximum dissolved iron concentration has been determined at 1.022 mg/L at the upstream location; and
- Dissolved zinc concentrations varied from 5.1 µg/L at the upstream location to 32.2 µg/L at the downstream location;
- The maximum total hardness has been recorded as 34 mg/L at the downstream location.

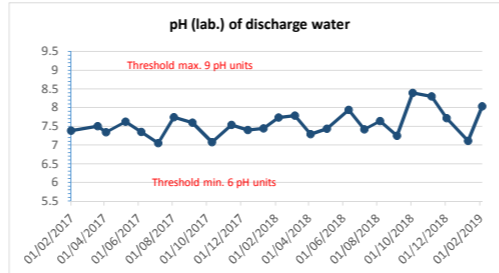
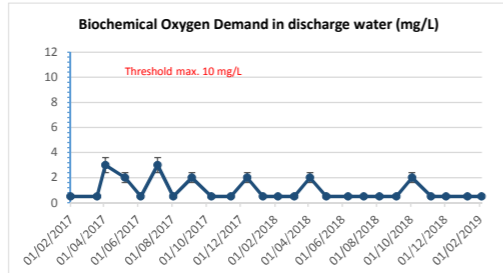
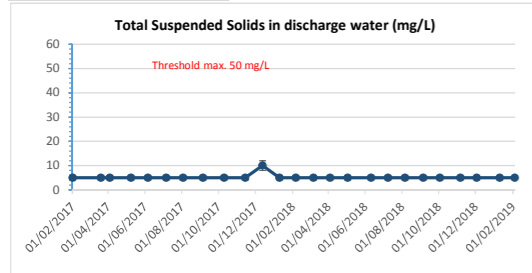
Appendix A
Presentation of Water Quality Results

DCS2 - Discharge Point

Parameter	Discharge Consent Threshold	Detection limit (typical)	27/11/2014	16/12/2014	18/12/2014	14/01/2015	04/02/2015	Duplicate/DCS7	11/02/2015	Duplicate/DCS7	Duplicate	23/03/2015	26/03/2015	Duplicate	23/04/2015	Duplicate	28/05/2015	28/05/2015	02/06/2015	30/07/2015	04/08/2015	Duplicate	02/09/2015	28/09/2015	Duplicate
Total Suspended Solids	50	10	3	11	18	22	6	<3	13	11	8	3	27	31	7	10	23	36	39	<10	14	23	11	<10	12
Biochemical Oxygen Demand	10	1	<1	<1	<1	1.58 [#]	1.76 [#]	1.61 [#]	1.03 [#]	<1	<2	<2	1.23 [#]	<2	1.04 [#]	<2	1.71 [#]	1.49 [#]	<1	<1	1	8	3	3	3
pH	>6 & <9	-	7.38	7.47	7.08	7.18	7.34 (7.00)	6.92	7.5 (7.48)	7.68	7.8	7.7	7.83 (8.54)	7.8	7.83	7.9	8.29	8.27	7.82	7.98	7.69 (8.41)	7.7	8.09	7.74	7.73
Total zinc ⁴	33.8	3	<18	<18	30	30	<18	<18	<18	<18	11.47	10.21	<18	30.07	<18	<3.73	17.8	14.6	<18	4	6	14.59	13	28	31
Dissolved zinc	490	1.5																							
Dissolved mercury ⁴	1.7	0.5	<0.1	<0.1	<0.1	<0.1	<0.1	<0.1	<0.1	<0.1	<0.2	<0.2	<0.1	<0.2	<0.1	<0.04	<0.01	<0.01	<0.1	<0.01	<0.01	1.051	<0.01	<0.5	<0.5
Dissolved cadmium ⁴	0.7	0.03	<0.6	<0.6	<0.6	<0.6	<0.6	<0.6	<0.6	<0.6	<0.09	<0.09	<0.6	<0.09	<0.6	<0.05	<0.1	<0.1	<0.6	0.13	0.06	0.121	0.36	0.2	0.21
Dissolved iron ⁴	3.9	0.0047	<0.23	<0.23	<0.23	<0.23	<0.23	0.34	<0.23	<0.23	0.04908	0.03045	<0.23	0.8087	<0.23	0.18	<0.019	<0.019	<0.23	<0.0047	0.1384	0.9932	0.0082	0.5821	0.5538
Dissolved copper ⁴	16.2	3	12	10	<9	<9	<9	<9	<9	<9	9.065	7.101	10	2.202	<9	4.765	9.39	8.77	<9	<3	<3	13.99	<0.3	5	5
Dissolved chromium ²	8.1	0.2	<2	<2	2	7	2	<2	<2	<2	<0.68	<0.68	<2	<0.68	<2	<0.28	2.13	2.01	<2	<0.2	<0.2	<0.68	0.6	<0.2	<0.2
Chromium VI	N/A	2	<5	<5	<5	9	<5	<5	<5	<5	<5	<5	<5	<5	<5	<30	<30	<5	<2	<2	<2	<2	<2	<2	<2
Chromium III	N/A	2	<30	<30	<30	<30	<30	<30	<30	<30	<30	<30	<30	<30	<30	<30	<30	<30	<30	<2	<2	<2	<2	<2	<2
Dissolved nickel ³	20	0.2	<3	<3	6	14	10	<3	14	11	12.01	6.544	5	0.833	7	5.578	5.22	5.09	5	6.5	7	9.321	5.3	5	4.9
Dissolved arsenic ¹	50	0.9	1	<1	<1	3	4.8	1.1	5.1	4.3	6.23	2.971	7.9	1.929	2.5	2.214	16	13.7	7.7	6.7	6.5	8.64	4.2	7.5	6.5
Dissolved lead ³	7.2	0.4	<6	<6	<6	<6	<6	<6	<6	<6	<0.173	<0.173	<6	<0.173	<6	<0.12	<0.02	<0.02	<6	2.6	2.5	0.37	4.7	4.4	4.5
Total hardness as CaCO3	N/A	1	123	137	132	135	137	24.1	150	146	139	136	106	114	147	159	140	148	141	179	175	183	163	157	157
Visible oil or grease	N/A	N/A	-	-	-	-	-	-	-	-	-	-	-	-	-	-	-	-	-	-	-	-	-	-	-

Notes:
 pH values presented in pH units. Values in brackets are field pH measurements. Total Suspended Solids, Biochemical Oxygen Demand, Total hardness & Dissolved iron concentrations are presented in mg/L, all other parameters are in µg/L.
^{1,2,3} Threshold from The Water Framework Directive (Priority Substances and Classification) Regulations (Northern Ireland) 2011
¹ Annual mean value presented for 'Good Standard for rivers and freshwater lakes'
² Annual mean environmental standard for chromium III (4.7µg/L) plus annual mean environmental standard for chromium VI (3.4µg/L) presented for 'Good Standard for rivers and freshwater lakes'
³ Annual mean environmental standard (AA-EQS) value presented for priority substance and its compounds for all rivers and lakes
⁴ Department Specific

[#] BOD over diluted, therefore result indicative only ^A Container with headspace
Exceedance of threshold
Duplicate sample



Notes:
 Half detection limit used for graphing when parameter less than detect
 Error bars of 20% to reflect limit of acceptable duplicate reproducibility

01/10/2015	22/10/2015	Duplicate	05/11/2015	Duplicate	09/12/2015	Duplicate	06/01/2016	Duplicate	03/02/2016	Duplicate	03/02/2016 Retest	Duplicate Retest	02/03/2016	Duplicate	06/04/2016	Duplicate	04/05/2016	Duplicate	02/06/2016	Duplicate	04/07/2016	Duplicate	03/08/2016	Duplicate	06/09/2016	Duplicate	05/10/2016	Duplicate	03/11/2016	Duplicate	06/12/2016	Duplicate
12	<10	<10	<10	<10	<10	<10	<10	<10	<10	<10	-	-	<10	<10	<10	<10	<10	<10	<10	<10	<10	<10	<10	<10	<10	<10	<10	<10	<10	<10	<10	<10
2	2	1	1	<1	<1	1	<1	<1	<1	<1	-	-	<1	3	1	1	2	2	<1	<1	<1	<1	<1	<1	<1	<1	<1	<1	<1	<1	<1	<1
8.96	7.35	7.14	7.85 (7.53)	8.06	7.76 (7.28)	8.07	7.58 (7.05)	7.47	7.32 (7.10)	7.27	-	-	7.08 (7.02)	7.09	7.27 (7.11)	7.42	7.36 (7.07)	7.39	7.06 (7.35)	7.07	7.38 (7.08)	7.17	7.29 (6.95)	7.19	7.34 (7.18)	7.37	7.53 (6.81)	7.06	7.47 (6.91)	7.29	7.16 (6.88)	7
7	12	10	5	5	13	12	9	9	33	35	30	30	13	11	19	18.6	<3	<3	5	6	3	3	3	3	<3	<3	7	6	7	6	<3	<3
0.5	<0.5	<0.5	<0.5	<0.5	<0.5	<0.5	<0.5	<0.5	<0.5	<0.5	-	-	0.6	<0.5	<0.5	<0.5	<0.5	<0.5	<0.01	<0.01	<0.01	<0.01	<0.01	<0.01	<0.01	<0.01	<0.01	<0.01	<0.01	<0.01	<0.01	<0.01
0.25	0.16	0.21	0.24	0.14	0.43	0.19	0.25	0.12	<0.03	<0.03	-	-	<0.03	<0.03	<0.03	<0.03	<0.03	<0.03	<0.03	<0.03	<0.03	<0.03	<0.03	<0.03	<0.03	<0.03	<0.03	<0.03	<0.03	<0.03	<0.03	<0.03
0.3261	0.6625	0.6613	0.2782	0.2208	0.0352	0.0075	0.1227	0.2064	0.1852	0.2213	-	-	0.4409	0.3247	0.4914	0.4934	0.5691	0.596	0.4472	0.4561	0.9222	0.9363	0.4984	0.5022	0.4894	0.4811	0.3381	0.3371	0.5496	0.6054	0.4327	0.44
4	<3	<3	<3	<3	<3	<3	<3	<3	<3	<3	-	-	<3	<3	<3	<3	<3	<3	<3	<3	<3	<3	<3	<3	<3	<3	<3	<3	<3	<3	<3	<3
0.2	<0.2	<0.2	<0.2	<0.2	1.4	<0.2	0.3	<0.2	0.7	<0.2	-	-	0.5	0.3	<0.2	<0.2	<0.2	<0.2	<0.2	<0.2	0.3	<0.2	0.3	<0.2	<0.2	0.5	<0.2	<0.2	<0.2	0.3	<0.2	
<2	<2	<2	<2	<2	<2	<2	<2	<2	<2	<2	-	-	<2	<2	<2	<2	<2	<2	<2	<2	<6	<6	<6	<6	<6	<6	<6	<6	<6	<6	<6	<6
<2	<2	<2	<2	<2	<2	<2	<2	<2	<2	<2	-	-	<2	<2	<2	<2	<2	<2	<2	<2	<6	<6	<6	<6	<6	<6	<6	<6	<6	<6	<6	<6
2.7	3.3	3.7	5.5	5.2	7.4	5.8	5.5	5.1	5.3	4.7	-	-	6.3	4.4	3	3	4.5	3.2	4.7	4.9	3.3	4.7	4.6	4	3.3	3.5	5.6	5.2	5.4	5.3	4.2	3.2
4.7	3.5	1.8	3.2	3.9	0.9	2.6	6.7	5.1	<0.9	<0.9	-	-	2.4	<0.9	<0.9	<0.9	2.5	6	2.6	2.5	<0.9	<0.9	<0.9	<0.9	<0.9	<0.9	<0.9	<0.9	<0.9	<0.9	<0.9	
<0.4	1.9	1.8	3.6	2.8	6.5	3.8	3.3	4	<0.4	<0.4	-	-	<0.4	<0.4	<0.4	<0.4	<0.4	<0.4	<0.4	<0.4	<0.4	<0.4	<0.4	<0.4	<0.4	<0.4	<0.4	<0.4	<0.4	<0.4	<0.4	<0.4
93	167	168	197	198	200	202	208	207	195	193	-	-	171	170	189	191	190	212	223	215	194	195	179	176	186	186	176	177	192	200	197	190
-	-	-	-	-	-	-	-	-	-	-	-	-	-	-	-	-	-	-	-	-	-	-	-	-	-	-	-	-	-	-	-	-

18/01/2017	Duplicate	01/02/2017	Duplicate	20/03/2017	Duplicate	04/04/2017	Duplicate	09/05/2017	Duplicate	06/06/2017	Duplicate	06/07/2017	Duplicate	03/08/2017	Duplicate	05/09/2017	Duplicate	10/10/2017	Duplicate	14/11/2017	Duplicate	13/12/2017	Duplicate	10/01/2018	Duplicate	06/02/2018	Duplicate	07/03/2018	Duplicate	04/04/2018	Duplicate	03/05/2018	Duplicate	
<10	<10	<10	<10	<10	<10	<10	<10	<10	<10	<10	<10	<10	<10	11	<10	<10	15	14	<10	<10	<10	<10	10	<10	<10	<10	<10	<10	<10	<10	12	<10	<10	
<1	<1	<1	<1	<1	<1	3	3	2	2	<1	<1	3	3	<1	<1	2	<1	<1	<1	<1	<1	2	4	<1	<1	2	<1	1	2	1	<1	<1		
7.05 (7.00)	6.68	7.39 (7.18)	7.53	7.51 (7.00)	7.5	7.34 (7.22)	7.36	7.63 (7.27)	7.35	7.35 (7.27)	7.32	7.05 (6.95)	7.27	7.75 (7.26)	7.7	7.6 (6.50)	7.67	7.08 (6.5)	6.85	7.54 (7.51)	7.33	7.4 (7.54)	7.56	7.45 (7.64)	7.09	7.74 (7.78)	7.7	7.79 (7.74)	7.82	7.29 (7.35)	7.38	7.44 (7.25)	7.62	
25	26	29	28	29	32	12	11	3	3	10	10	2.6	2.7	NA	NA	9	10																	
																		3.9	2.9	2.4	2.2	25.0	23.7	49	48	22.8	22.9	11.6	12.2	6.5	8.4	24.9	22.8	
<0.5	<0.5	<0.01	<0.01	<0.5	<0.5	<0.5	<0.5	<0.5	<0.5	<0.5	<0.5	<1	<1	<1	<1	<0.5	<0.5	<0.01	<0.01	<0.01	<0.01	<0.5	<0.5	0.5	<0.5	<0.5	<0.5	<0.5	<0.5	<0.5	<0.5	<0.5	<0.5	
<0.03	<0.03	<0.03	<0.03	<0.03	<0.03	<0.03	<0.03	<0.03	<0.03	<0.03	<0.03	<0.03	<0.03	<0.03	<0.03	<0.03	<0.03	<0.03	<0.03	<0.03	<0.03	<0.03	<0.03	<0.03	<0.03	<0.03	<0.03	<0.03	<0.03	<0.03	<0.03	<0.03	<0.03	<0.03
0.1683	0.1642	0.1571	0.1609	<0.0047	<0.0047	0.7468	0.7717	0.4589	0.4493	0.257	0.2594	1.981	1.87	0.407	0.3984	0.3153	0.1476	1.798	1.865	0.3139	0.2942	0.1678	0.2195	0.3651	0.3601	0.1836	0.1862	0.238	0.2461	0.5607	0.5754	0.2296	0.3156	
<3	<3	<3	<3	<3	<3	<3	<3	<3	<3	<3	<3	<3	<3	<3	<3	<3	<3	<3	<3	<3	<3	<3	<3	<3	<3	<3	<3	<3	<3	<3	<3	<3	<3	
<0.2	0.3	0.2	<0.2	<0.2	<0.2	<0.2	<0.2	<0.2	<0.2	<0.2	<0.2	0.9	<0.2	<0.2	<0.2	2.2	<0.2	0.3	0.3	0.2	<0.2	<0.2	<0.2	<0.2	<0.2	<0.2	0.9	0.3	0.8	<0.2	<0.2	0.6	0.2	
<6	<6	<6	<6	<6	<6	NA	NA	<6	<6	<6	<6	NA	NA	NA	NA	<6	<6	<6	<6	<6	<6	<6	<6	<6	<6	<6	<6	<6	<6	<6	<6	<6	<6	
<6	<6	<6	<6	<6	<6	<6	<6	<6	<6	<6	<6	<6	<6	<6	<6	<6	<6	<6	<6	<6	<6	<6	<6	<6	<6	<6	<6	<6	<6	<6	<6	<6	<6	
5.9	5.7	8	7.6	4.4	3.9	3.8	4	3.2	2.7	2	2.9	1.7	1.5	1.8	2.1	2	3.2	2.7	2.7	4.3	3.5	4.8	4.5	3.9	4.2	5.1	4.9	4.7	4.5	3.6	3.8	3.8	3.4	
3.3	2	2.6	2.2	<0.9	<0.9	1.5	2.1	<0.9	2.5	2.1	<0.9	5.8	4.3	<0.9	<0.9	1.1	<0.9	4.1	3.5	1.2	3.4	1.3	1.9	<0.9	3.2	<0.9	<0.9	<0.9	<0.9	<0.9	<0.9	1.9	2	
<0.4	<0.4	<0.4	<0.4	<0.4	<0.4	<0.4	<0.4	<0.4	<0.4	<0.4	<0.4	0.5	<0.4	<0.4	<0.4	<0.4	<0.4	<0.4	<0.4	<0.4	<0.4	<0.4	<0.4	<0.4	<0.4	<0.4	<0.4	<0.4	<0.4	<0.4	<0.4	<0.4	<0.4	
284	284	196	199	191	188	186	186	179	183	173	172	200	204	175	167	195	180	203	208	179	178	208	207	194	193	188	184	189	180	180	176	190	189	
-	-	-	-	-	-	-	-	-	-	-	-	-	-	-	-	-	-	-	-	-	-	-	-	-	-	-	-	-	-	-	-	-	-	-

11/06/2018	Duplicate	09/07/2018	Duplicate	06/08/2018	Duplicate	05/09/2018	Duplicate	03/10/2018	Duplicate	06/11/2018	Duplicate	03/12/2018	Duplicate	10/01/2019	Duplicate	04/02/2019	Duplicate
<10	<10	<10	<10	<10	<10	<10	<10	<10	<10	<10	<10	<10	<10	<10	<10	<10	<10
<1	<1	<1	<1	<1	<1	<1	<1	2	2	<1	<1	<1	<1	<1	<1	<1	<1
7.94 (7.72)	8.05	7.42 (8.45)	8.08	7.64 (8.24)	8.1	7.25 (8.3)	8.34	8.4 (8.03)	8.34	8.3 (8.03)	8.3	7.72 (7.7)	8.11	7.11 (8.01)	7.77	8.04 (7.81)	8.22
6.5	64.8	5.1	2.9	5.9	5.2	3.4	<1.5	4.8	5.1	11.2	11.9	17.5	17.2	12.8	11.4	18	34.8
<0.5	<0.5	<0.5	<0.5	<0.5	<0.5	<0.5	<0.5	<0.5	<0.5	<0.5	<0.5	<0.5	<0.5	<0.5	<0.5	<0.5	<0.5
<0.03	<0.03	<0.03	<0.03	<0.03	<0.03	<0.03	<0.03	<0.03	<0.03	<0.03	<0.03	<0.03	<0.03	<0.03	<0.03	<0.03	<0.03
0.1179	0.0992	0.0244	0.0181	0.0141	0.0114	<0.0047	<0.0047	<0.0047	<0.0047	<0.0047	<0.0047	<0.0047	0.0047	<0.0047	<0.0047	<0.0047	<0.0047
<3	<3	<3	<3	<3	<3	<3	<3	<3	<3	<3	<3	<3	<3	<3	<3	<3	<3
0.6	0.5	<0.2	<0.2	1.1	1.4	<0.2	<0.2	0.4	<0.2	<0.2	<0.2	0.2	<0.2	<0.2	<0.2	<0.2	<0.2
<6	<6	<6	<6	<6	<6	<6	<6	<6	<6	<6	<6	<6	<6	<6	<6	<6	<6
<6	<6	<6	<6	<6	<6	<6	<6	<6	<6	<6	<6	<6	<6	<6	<6	<6	<6
3.3	3.1	2.2	2.7	3.1	2.3	2.2	<0.2	3.1	3.2	4.1	3.4	4.3	3.9	4.4	4.5	3.4	3.5
<0.9	<0.9	<0.9	<0.9	<0.9	<0.9	2.0	<0.9	<0.9	<0.9	<0.9	<0.9	<0.9	<0.9	<0.9	1	3.4	3.3
<0.4	<0.4	<0.4	<0.4	<0.4	<0.4	<0.4	<0.4	<0.4	<0.4	<0.4	<0.4	<0.4	<0.4	<0.4	<0.4	<0.4	<0.4
177	177	178	178	170	170	182	186	186	188	179	176	174	177	189	187	176	174
-	-	-	-	-	-	-	-	-	-	-	-	-	-	-	-	-	-

DCS1 - Curraghinalt Burn upstream

Parameter	Detection limit (typical)	27/11/2014	16/12/2014	18/12/2014	14/01/2015	04/02/2015	11/02/2015	Duplicate	26/03/2015	23/04/2015	21/05/2015	28/05/2015	02/06/2015	28/07/2015	30/07/2015	04/08/2015	02/09/2015	01/10/2015	22/10/2015	05/11/2015	09/12/2015	06/01/2016	03/02/2016	02/03/2016	06/04/2016	04/05/2016	02/06/2016	
Total Suspended Solids	10	<3	<3	<3	9	<3	<3	<2	18	<3	3	5	4	9	<10	<10	32	<10	<10	17	<10	<10	<10	<10	<10	<10	<10	<10
Biochemical Oxygen Demand	1	<1	<1	<1	1.87 [#]	1.39 [#]	<1	<2	1.23 [#]	<1	1.29 [#]	<1	<1	1.49 ^{#A}	1	2	1	2	<1	2	2	1	<1	2	2	2	<1	<1
pH	-	6.7	6.75	7	6.9	7.23 (6.73)	6.8 (7.33)	8.2	6.81 (7.05)	6.99	7.19	7.7	6.57	5.94 (6.49)	6.85	5.74 (8.36)	7.46	6.75	7.34	7.74 (7.54)	6.79 (6.49)	7.59 (6.64)	6.09 (4.82)	7.18 (6.87)	6.70 (6.71)	6.94 (7.5)	7.21 (7.78)	
Total zinc	3	<18	<18	<18	20	<18	<18	5.394	<18	<18	<18	7.49	<18	14	8	7	8	7	6	28	4	4	20	8	4	<3	<3	
Dissolved zinc	1.5																											
Dissolved mercury	0.5	<0.1	<0.1	<0.1	<0.1	<0.1	<0.1	<0.2	<0.1	<0.1	<0.1	<0.01	<0.1	0.51	<0.01	<0.01	<0.01	<0.5	<0.5	<0.5	<0.5	<0.5	<0.5	<0.5	<0.5	<0.5	<0.5	<0.5
Dissolved cadmium	0.03	<0.6	<0.6	<0.6	<0.6	<0.6	<0.6	<0.09	<0.6	<0.6	<0.6	<0.1	<0.6	6.9	<0.03	<0.03	<0.03	<0.03	<0.03	0.09	0.03	<0.03	<0.03	<0.03	<0.03	<0.03	<0.03	<0.03
Dissolved iron	0.0047	2.07	0.52	0.67	0.39	0.36	0.36	0.6633	<0.23	1.34	1.34	1.47	0.52	1.2	2.569	2.046	6.269	6.646	5.39	4.41	1.131	1.276	0.3198	0.7347	0.7676	1.861	3.229	
Dissolved copper	3	<9	<9	<9	<9	<9	<9	7.207	<9	<9	<9	2.56	<9	9.6	<3	<3	4	<3	<3	4	<3	<3	<3	<3	<3	<3	<3	<3
Dissolved chromium	0.2	<2	<2	<2	<2	<2	<2	<0.68	<2	<2	<2	0.956	<2	4.7	<0.2	0.6	1.2	0.4	<0.2	0.3	<0.2	<0.2	<0.2	<0.2	<0.2	<0.2	<0.2	<0.2
Chromium VI	2	<5	<5	<5	<5	<5	<5	<5	<5	<5	<5	<30	<5	<20	<2	<2	<2	<2	<2	<2	<2	<2	<2	<2	<2	<2	<2	<2
Chromium III	2	<30	<30	<30	<30	<30	<30	<30	<30	<30	<30	<30	<30	<20	<2	<2	<2	<2	<2	<2	<2	<2	<2	<2	<2	<2	<2	<2
Dissolved nickel	0.2	<3	<3	<3	<3	<3	<3	0.702	<3	<3	<3	0.913	<3	3.1	0.7	1	1.6	1.3	0.3	0.7	<0.2	1.2	0.4	0.3	<0.2	<0.2	<0.2	0.3
Dissolved arsenic	0.9	2.4	<1	<1	<1	1.3	<1	1.197	2	3.2	2.2	3.69	1.2	2.8	2.5	2.6	4.6	5.9	2.8	<0.9	1.2	1.8	<0.9	<0.9	<0.9	2.5	2.9	
Dissolved lead	0.4	<6	<6	<6	<6	<6	<6	0.284	<6	<6	<6	0.315	<6	2.1	<0.4	<0.4	2.7	<0.4	1.2	1.1	1.2	<0.4	0.6	<0.4	<0.4	<0.4	<0.4	
Total hardness as CaCO ₃	1	21.7	16.2	21.1	30.1	24.2	19.7	19	13.4	33.1	17.6	29.4	9.98	<15	229	12	23	30	24	37	7	12	18	16	9	21	33	
Visible oil or grease	N/A	-	-	-	-	-	-	-	-	-	-	-	-	-	-	-	-	-	-	-	-	-	-	-	-	-	-	-

Notes:

pH values presented in pH units. Values in brackets are field pH measurements. Total Suspended Solids, Biochemical Oxygen Demand, Total hardness & Dissolved iron concentrations are presented in mg/L, all other parameters are in µg/L.

[#] BOD over diluted, therefore result indicative only ^A Container with headspace

DCS3 - Curraghinalt Burn downstream

Parameter	Detection limit (typical)	27/11/2014	16/12/2014	18/12/2014	14/01/2015	04/02/2015	11/02/2015	Duplicate	26/03/2015	23/04/2015	21/05/2015	28/05/2015	02/06/2015	28/07/2015	30/07/2015	04/08/2015	02/09/2015	01/10/2015	22/10/2015	05/11/2015	09/12/2015	06/01/2016	03/02/2016	02/03/2016	06/04/2016	04/05/2016	02/06/2016	
Total Suspended Solids	10	3	8	4	5	3	5	28	72	<3	18	9	3	16	<10	<10	<10	<10	<10	10	<10	<10	<10	<10	<10	<10	<10	<10
Biochemical Oxygen Demand	1	1.08 [#]	<1	<1	1.65 [#]	1.91 [#]	<1	1.31 [#]	<1	1.25 [#]	1.22 [#]	<1	<2	1.42 ^{#A}	1	2	1	1	<1	2	3	<1	<1	2	2	1	1	
pH	-	7.19	7.46	6.95	7.44	7.16 (6.93)	7.45 (7.2)	6.91 (7.31)	7.82	7.88	7.76	6.81	7.4	6.02 (6.28)	7.12	5.95 (6.40)	7.12	6.45	7.46	7.73 (7.5)	7.45 (6.5)	7.47 (6.68)	7.35 (5.77)	6.86 (7.14)	7.12 (6.77)	7.4 (7.25)	7.06 (7.47)	
Total zinc	3	<18	<18	<18	20	<18	<18	<18	<18	<18	11.2	<18	36.51	13	9	7	9	7	8	17	4	6	18	8	4	<3	5	
Dissolved zinc	1.5																											
Dissolved mercury	0.5	<0.1	<0.1	<0.1	<0.1	<0.1	<0.1	<0.1	<0.1	<0.1	<0.01	<0.1	<0.2	<0.5	<0.01	<0.01	<0.01	0.6	<0.5	<0.5	<0.5	<0.5	<0.5	<0.5	<0.5	<0.5	<0.5	<0.5
Dissolved cadmium	0.03	<0.6	<0.6	<0.6	<0.6	<0.6	<0.6	<0.6	<0.6	<0.6	<0.1	<0.6	<0.09	0.45	<0.03	<0.03	<0.03	<0.03	<0.03	0.07	<0.03	<0.03	<0.03	<0.03	<0.03	<0.03	<0.03	<0.03
Dissolved iron	0.0047	1.78	0.54	0.65	0.38	0.25	0.25	0.24	0.8	1.13	1.03	0.52	1.485	1.2	2.634	1.843	3.455	6.574	3.424	2.834	1.016	0.993	0.305	0.508	0.7319	1.043	1.172	
Dissolved copper	3	<9	<9	<9	<9	<9	<9	<9	<9	<9	5.58	<9	19.83	4.2	3	<3	3	<3	<3	7	<3	<3	<3	<3	<3	<3	<3	<3
Dissolved chromium	0.2	<2	<2	<2	6	<2	<2	<2	<2	<2	1.8	<2	1.017	4.6	<0.2	<0.2	<0.2	<0.2	<0.2	0.9	<0.2	<0.2	<0.2	0.2	<0.2	<0.2	<0.2	
Chromium VI	2	<5	<5	<5	8	<5	<5	<5	<5	<5	<30	<5	<20	<2	<2	<2	<2	<2	<2	<2	<2	<2	<2	<2	<2	<2	<2	
Chromium III	2	<30	<30	<30	<30	<30	<30	<30	<30	<30	<30	<30	<30	<20	<2	<2	<2	<2	<2	<2	<2	<2	<2	<2	<2	<2	<2	<2
Dissolved nickel	0.2	<3	<3	<3	<3	<3	4	<3	<3	<3	2.12	<3	6.816	4.6	0.7	0.4	2.4	1.4	2.3	2.5	<0.2	1.1	0.7	1	<0.2	1.8	3	
Dissolved arsenic	0.9	2.1	<1	<1	<1	2	1.3	2.7	5.3	8.3	7.7	1.5	7.069	1.3	<0.9	2	3.4	6.5	3.9	3.6	2.8	5.3	1.3	<0.9	<0.9	2.1	1.6	
Dissolved lead	0.4	<6	<6	<6	<6	<6	<6	<6	<6	0.187	<6	0.381	<1	1	0.7	1.2	0.9	<0.4	2.8	<0.4	0.8	2	<0.4	<0.4	<0.4	<0.4	<0.4	
Total hardness as CaCO ₃	1	35.5	27.5	21	34.5	41.4	49.4	13.7	71.4	36.6	65.1	10.8	25	<15	21	21	68	31	84	100	22	57	33	41	12	102	157	
Visible oil or grease	N/A	-	-	-	-	-	-	-	-	-	-	-	-	-	-	-	-	-	-	-	-	-	-	-	-	-	-	

Notes:

pH values presented in pH units. Values in brackets are field pH measurements. Total Suspended Solids, Biochemical Oxygen Demand, Total hardness & Dissolved iron concentrations are presented in mg/L, all other parameters are in µg/L.

[#] BOD over diluted, therefore result indicative only ^A Container with headspace

04/07/2016	03/08/2016	06/09/2016	05/10/2016	03/11/2016	06/12/2016	18/01/2017	01/02/2017	20/03/2017	04/04/2017	09/05/2017	06/06/2017	06/07/2017	03/08/2017	05/09/2017	10/10/2017	14/11/2017	13/12/2017	10/01/2018	06/02/2018	07/03/2018	04/04/2018	03/05/2018	11/06/2018	09/07/2018	06/08/2018	05/09/2018	03/10/2018	06/11/2018	03/12/2018	10/01/2019	04/02/2019		
<10	<10	<10	<10	<10	<10	<10	<10	<10	19	<10	<10	<10	<10	<10	<10	<10	<10	<10	<10	<10	<10	<10	<10	<10	<10	<10	<10	<10	<10	<10	<10	<10	<10
<1	2	2	2	1	1	<1	9	<1	2	1	<1	1	<1	<1	<1	<1	<1	<1	<1	<1	<1	<1	1	<1	2	<1	6	<1	<1	<1	<1		
7.04 (7.34)	6.51 (6.99)	6.5 (7.52)	7.76 (7.33)	7.81 (7.42)	6.55 (7.36)	6.85 (7.33)	6.57 (6.66)	6.14 (6.72)	7.15 (6.8)	8.8 (7.62)	6.55 (6.71)	6.49 (7.49)	6.28 (5.28)	6.42 (6.81)	6.05 (6.63)	7.33 (7.32)	6.9 (7.85)	6.87 (7.52)	7.67 (7.9)	7.87 (7.84)	6.92 (6.03)	7.61 (6.75)	7.85 (7.41)	6.26 (7.86)	6.22 (7.61)	6.12 (7.87)	7.4 (7.97)	6.75 (6.66)	6.1 (6.46)	7.45 (7.85)	6.08 (5.63)		
5	10	7	7	5	3	4	5	5	7	<3	5	3.8	NA	8	7.3	6.1	2.9	6.6	8.5	2.4	4.7	7.4	6.4	5.1	6.8	5.5	4.5	6	5.8	5.7	6.5		
<0.01	<0.01	<0.01	<0.01	<0.01	<0.5	<0.5	<0.01	<0.5	<0.5	<0.5	<0.5	<1	<1	<0.5	<0.01	<0.01	<0.5	<0.5	<0.5	<0.5	<0.5	<0.5	<0.5	<0.5	<0.5	<0.5	<0.5	<0.5	<0.5	<0.5	<0.5		
<0.03	<0.03	<0.03	<0.03	<0.03	<0.03	<0.03	<0.03	<0.03	<0.03	<0.03	<0.03	<0.03	<0.03	<0.03	<0.03	<0.03	<0.03	<0.03	<0.03	<0.03	<0.03	<0.03	<0.03	<0.03	<0.03	<0.03	<0.03	<0.03	<0.03	<0.03	<0.03		
1.876	3.405	3.162	8.689	7.586	3.364	0.6952	0.7231	0.7234	1.113	1.456	1.272	2.382	2.006	1.828	1.448	1.393	0.5909	0.7136	0.5669	0.4264	0.6562	1.166	2.54	3.09	3.451	3.915	3.377	1.273	1.088	1.727	0.4519		
<3	<3	<3	4	6	<3	<3	<3	<3	<3	<3	<3	<3	6	3	<3	<3	<3	<3	<3	<3	3	7	6	5	<3	<3	<3	<3	<3	<3	<3		
<0.2	<0.2	<0.2	0.5	<0.2	0.5	0.2	0.7	<0.2	<0.2	<0.2	<0.2	<0.2	<0.2	<0.2	<0.2	<0.2	<0.2	<0.2	0.5	<0.2	<0.2	1	<0.2	0.3	<0.2	<0.2	<0.2	<0.2	<0.2	<0.2	<0.2		
<6	<6	<6	<6	<6	<6	<6	<6	<6	NA	<6	<6	NA	NA	<6	<6	<6	<6	<6	<6	<6	<6	<6	<6	<6	<6	<6	<6	<6	<6	<6	<6		
<6	<6	<6	<6	<6	<6	<6	<6	<6	<6	<6	<6	<6	<6	<6	<6	<6	<6	<6	<6	<6	<6	<6	<6	<6	<6	<6	<6	<6	<6	<6	<6		
0.4	0.7	0.2	2.2	1.5	0.9	0.5	0.6	0.3	0.6	0.4	<0.2	<0.2	<0.2	0.9	1.1	<0.2	<0.2	0.5	0.2	0.5	<0.2	1.7	1.3	0.7	0.3	<0.2	0.3	0.7	<0.2	0.6	<0.2		
4	<0.9	1.1	7.2	10.5	5.4	0.9	<0.9	<0.9	<0.9	3.6	2.1	1.7	<0.9	1.7	<0.9	2	1	<0.9	<0.9	<0.9	2.1	<0.9	1.7	3.1	1.8	2.8	<0.9	<0.9	<0.9	3.4	1.9		
<0.4	<0.4	<0.4	<0.4	<0.4	0.9	<0.4	<0.4	<0.4	<0.4	<0.4	<0.4	<0.4	<0.4	<0.4	<0.4	<0.4	<0.4	<0.4	<0.4	<0.4	<0.4	<0.4	<0.4	<0.4	<0.4	<0.4	<0.4	<0.4	<0.4	<0.4	<0.4		
16	16	14	27	31	27	18	13	10	127	38	10	17	8	14	11	13	9	10	22	14	9	17	27	33	23	24	25	13	12	19	9		
-	-	-	-	-	-	-	-	-	-	-	-	-	-	-	-	-	-	-	-	-	-	-	-	-	-	-	-	-	-	-	-	-	

04/07/2016	03/08/2016	06/09/2016	05/10/2016	03/11/2016	06/12/2016	18/01/2017	01/02/2017	20/03/2017	04/04/2017	09/05/2017	06/06/2017	06/07/2017	03/08/2017	05/09/2017	10/10/2017	14/11/2017	13/12/2017	10/01/2018	06/02/2018	07/03/2018	04/04/2018	03/05/2018	11/06/2018	09/07/2018	06/08/2018	05/09/2018	03/10/2018	06/11/2018	03/12/2018	10/01/2019	04/02/2019	
<10	<10	<10	<10	<10	<10	<10	<10	<10	25	<10	<10	<10	<10	15	<10	<10	14	<10	<10	<10	<10	<10	<10	<10	<10	<10	<10	<10	<10	<10	<10	<10
1	2	1	2	<1	1	<1	<1	<1	2	1	<1	<1	<1	<1	<1	<1	<1	<1	<1	<1	<1	1	<1	<1	<1	<1	6	<1	<1	<1	1	
6.74 (7.20)	6.95 (7.12)	7.02 (7.13)	7.52 (7.12)	7.62 (6.97)	7.45 (6.91)	7.32 (6.74)	7.48 (6.71)	6.93 (7.06)	7.41 (7.16)	7.76 (7.39)	7.14 (7.09)	7.37 (7.49)	6.41 (6.9)	7.36 (6.63)	7.19 (6.29)	6.37 (7.01)	7.3	7.91 (7.33)	7.66 (7.79)	7.91 (8.16)	7.3 (6.95)	7.68 (7.3)	7.99 (7.91)	7.98 (8.45)	7.71 (7.82)	7.47 (7.95)	7.91 (7.77)	7.66 (7.07)	7.71 (6.75)	7.79 (7.71)	7.81 (6.2)	
5	6	6	7	7	6	8	10	5	9	3	6	4.6	NA	10	7.4	6.3	3.1	15.8	16.7	5.3	4.2	9.6	9.3	2.9	7.6	19	8.7	22	14.8	40.5	29.5	
<0.01	<0.01	<0.01	<0.01	<0.01	<0.5	<0.5	<0.01	<0.5	<0.5	<0.5	<0.5	<1	<1	<0.5	<0.01	<0.01	<0.5	<0.5	<0.5	<0.5	<0.5	<0.5	<0.5	<0.5	<0.5	<0.5	<0.5	<0.5	<0.5	<0.5	<0.5	
<0.03	<0.03	<0.03	<0.03	<0.03	<0.03	<0.03	<0.03	<0.03	<0.03	<0.03	<0.03	<0.03	<0.03	<0.03	<0.03	<0.03	<0.03	<0.03	<0.03	<0.03	<0.03	<0.03	<0.03	<0.03	<0.03	<0.03	<0.03	<0.03	<0.03	<0.03	<0.03	<0.03
1.901	3.003	3.11	3.905	3.272	1.987	0.5208	0.7368	0.7424	0.904	0.5302	1.058	2.146	1.896	1.281	1.422	1.352	0.5759	0.6817	0.3665	0.3316	0.6125	1.03	1.102	0.5419	1.95	2.043	2.194	1.043	0.9809	1.077	0.4152	
<3	<3	<3	<3	<3	<3	<3	<3	<3	<3	<3	<3	<3	4	3	<3	<3	<3	<3	<3	<3	4	3	4	4	<3	<3	<3	<3	<3	<3	<3	
<0.2	<0.2	<0.2	<0.2	<0.2	0.4	0.3	1.3	<0.2	<0.2	<0.2	<0.2	<0.2	<0.2	<0.2	<0.2	<0.2	<0.2	<0.2	<0.2	0.3	<0.2	0.5	1.7	<0.2	<0.2	<0.2	<0.2	<0.2	0.4	<0.2	<0.2	
<6	<6	<6	<6	<6	<6	<6	<6	<6	NA	<6	<6	NA	NA	<6	<6	<6	<6	<6	<6	<6	<6	<6	<6	<6	<6	<6	<6	<6	<6	<6	<6	
<6	<6	<6	<6	<6	<6	<6	<6	<6	<6	<6	<6	<6	<6	<6	<6	<6	<6	<6	<6	<6	<6	<6	<6	<6	<6	<6	<6	<6	<6	<6	<6	
<0.2	1	0.4	3.7	3.9	2.2	1.6	1.2	<0.2	0.9	1.4	0.4	<0.2	<0.2	1.9	0.9	0.4	<0.2	1.1	2.4	1.5	0.7	0.9	1.6	2.2	1.7	1.5	1.7	1.4	0.9	2.6	0.5	
4.2	1.4	3.8	1.3	7.4	4.2	<0.9	2.4	<0.9	2.9	<0.9	1.5	6.6	1.7	1.7	2.9	<0.9	<0.9	1.6	<0.9	1.7	<0.9	2.3	<0.9	<0.9	<0.9	3.4	1.2	<0.9	<0.9	1.4	1.6	
<0.4	<0.4	<0.4	<0.4	<0.4	<0.4	<0.4	<0.4	<0.4	<0.4	<0.4	<0.4	<0.4	<0.4	<0.4	<0.4	<0.4	<0.4	<0.4	<0.4	<0.4	<0.4	<0.4	<0.4	<0.4	<0.4	<0.4	<0.4	<0.4	<0.4	<0.4	<0.4	
26	35	35	110	124	93	71	23	12	49	128	41	39	16	56	19	16	15	40	85	55	20	31	117	146	85	97	77	45	29	83	28	
-	-	-	-	-	-	-	-	-	-	-	-	-	-	-	-	-	-	-	-	-	-	-	-	-	-	-	-	-	-	-	-	-

DCS4 - Owenkille River upstream

Parameter	Detection limit (typical)	27/11/2014	16/12/2014	18/12/2014	14/01/2015	04/02/2015	11/02/2015	26/03/2015	Duplicate	23/04/2015	Duplicate	21/05/2015	02/06/2015	07/07/2015	28/07/2015	30/07/2015	04/08/2015	Duplicate	02/09/2015	01/10/2015	22/10/2015	05/11/2015	09/12/2015	06/01/2016	03/02/2016	02/03/2016	06/04/2016	04/05/2016	
Total Suspended Solids	10	<3	<3	6	<3	<3	<3	42	43	<3	<2	6	9	13	9	<10	12	3	<10	<10	<10	<10	11	<10	<10	<10	<10	10	<10
Biochemical Oxygen Demand	1	<1	<1	<1	1.47 ^a	1.29 ^a	<1	2.57 ^a	8	<1	<2	1.95 ^a	1.28 ^a	2.47 ^a	1.95 ^{ab}	1	1	<2	2	1	2	2	1	1	1	2	2	1	
pH	-	6.84	7.07	6.68	6.77	6.7 (5.92)	7.06 (8.15)	6.9 (8.54)	7.7	7.93	7.2	7.23	6.79	(7.36)	6.1 (6.50)	6.68	7.28 (9.90)	7.4	7.79	6.45	7.46	7.65 (7.14)	6.83 (6.65)	7.1 (6.16)	7.08 (6.24)	7.19 (6.29)	7.2 (7.19)	7.08 (7.58)	
Total zinc	3	<18	<18	<18	<18	<18	<18	<18	9.716	<18	<0.63	<18	<18	6.7	9.6	6	6	10.31	4	3	<3	3	5	4	10	6	4	<3	
Dissolved zinc	1.5																												
Dissolved mercury	0.5	<0.1	<0.1	<0.1	<0.1	<0.1	<0.1	<0.1	<0.2	<0.1	<0.03	<0.1	<0.1	<0.5	<0.5	0.04	<0.01	<0.2	<0.01	0.6	<0.5	<0.5	<0.5	<0.5	<0.5	<0.5	<0.5	<0.5	<0.5
Dissolved cadmium	0.03	<0.6	<0.6	<0.6	<0.6	<0.6	<0.6	<0.6	<0.09	<0.6	<0.01	<0.6	<0.6	<0.08	0.6	<0.03	<0.03	<0.09	0.05	0.14	<0.03	0.08	0.2	0.15	<0.03	<0.03	<0.03	<0.03	<0.03
Dissolved iron	0.0047	1.05	0.5	0.45	0.43	0.4	0.36	0.25	0.2771	0.56	0.806	0.53	0.36	0.56	0.78	1.146	2.459	1.482	1.806	1.503	0.9033	1.269	0.7594	0.7784	0.242	0.6605	0.6255	0.6549	
Dissolved copper	3	<9	<9	<9	<9	<9	<9	<9	20.09	<9	0.445	<9	<9	1.1	3.2	<3	<3	11.24	<3	<3	<3	<3	<3	<3	<3	<3	<3	<3	<3
Dissolved chromium	0.2	<2	<2	<2	<2	<2	<2	<2	<0.68	<2	<0.58	<2	<2	<1	5.8	<0.2	<0.2	<0.68	1	0.6	<0.2	<0.2	<0.2	0.3	<0.2	0.3	<0.2	<0.2	<0.2
Chromium VI	2	<5	<5	<5	<5	<5	<5	<5	<5	<5	<5	<5	<5	<20	<20	<2	<2	<2	<2	<2	<2	<2	<2	<2	<2	<2	<2	<2	<2
Chromium III	2	<30	<30	<30	<30	<30	<30	<30	<30	<30	<30	<30	<30	<20	<20	<2	<2	<2	<2	<2	<2	<2	<2	<2	<2	<2	<2	<2	<2
Dissolved nickel	0.2	<3	57	<3	<3	<3	<3	4	6.45	<3	0.569	<3	<3	<1	6.3	0.4	0.7	1.513	1.3	0.6	0.4	0.7	<0.2	1.6	0.8	<0.2	<0.2	<0.2	<0.2
Dissolved arsenic	0.9	<1	<1	<1	<1	<1	<1	4.8	5.032	1.5	1.399	1.4	1.1	<1	1.2	2.4	2.4	3.454	2.2	2.8	1.6	<0.9	2.7	<0.9	<0.9	<0.9	<0.9	<0.9	<0.9
Dissolved lead	0.4	<6	<6	<6	<6	<6	<6	<6	0.543	<6	<0.02	<6	<6	<1	<1	2.2	0.5	0.573	4	<0.4	<0.4	1.9	<0.4	<0.4	1.2	<0.4	<0.4	<0.4	<0.4
Total hardness as CaCO3	1	28.8	24.3	19.1	25.1	31	27.9	17.6	21	37.5	38	23.7	16.2	30	<15	25	23	22	32	41	29	38	16	15	21	17	20	26	
Visible oil or grease	N/A	-	-	-	-	-	-	-	-	-	-	-	-	-	-	-	-	-	-	-	-	-	-	-	-	-	-	-	-

Notes:
 pH values presented in pH units. Values in brackets are field pH measurements. Total Suspended Solids, Biochemical Oxygen Demand, Total hardness & Dissolved iron concentrations are presented in mg/L, all other parameters are in µg/L.
^a BOD over diluted, therefore result indicative only ^Δ Container with headspace

DCS5 - Owenkille River downstream

Parameter	Detection limit (typical)	27/11/2014	16/12/2014	18/12/2014	14/01/2015	04/02/2015	11/02/2015	23/03/2015	26/03/2015	23/04/2015	21/05/2015	Duplicate	02/06/2015	07/07/2015	28/07/2015	30/07/2015	04/08/2015	02/09/2015	01/10/2015	22/10/2015	05/11/2015	09/12/2015	06/01/2016	03/02/2016	02/03/2016	06/04/2016	04/05/2016	02/06/2016	
Total Suspended Solids	10	<3	<3	8	<3	<3	<3	5	35	<3	<3	2	<3	14	12	<10	<10	<10	<10	<10	<10	<10	<10	<10	<10	<10	<10	<10	<10
Biochemical Oxygen Demand	1	<1	<1	<1	1.61 ^a	1.37 ^a	<1	<2	2.59 ^a	<1	1.17 ^a	<2	1.1 ^a	2.01 ^a	2.04 ^{ab}	1	2	1	1	<1	1	2	1	1	2	2	2	1	
pH	-	7.04	7.15	6.61	6.76	6.66 (5.54)	7.03 (7.45)	7.5	6.9 (6.77)	7.71	6.94	7.5	6.88	7.23 (7.41)	6.2 (6.96)	6.88	6.51 (7.41)	6.51	7.91	7.12	7.49 (7.11)	7.55 (6.66)	7.31 (6.49)	6.91 (6.22)	7.07 (6.32)	7.2 (7.23)	7.09 (7.7)	6.64 (7.87)	
Total zinc	3	<18	<18	<18	<18	<18	<18	11.69	20	<18	<18	4.396	<18	8.8	11	7	5	5	<3	4	4	5	5	9	5	4	<3	<3	
Dissolved zinc	1.5																												
Dissolved mercury	0.5	<0.1	<0.1	<0.1	<0.1	<0.1	<0.1	<0.2	<0.1	<0.1	<0.1	<0.2	<0.1	<0.5	<0.5	0.05	0.03	0.01	<0.5	<0.5	<0.5	<0.5	<0.5	<0.5	<0.5	<0.5	<0.5	<0.5	<0.1
Dissolved cadmium	0.03	<0.6	<0.6	<0.6	<0.6	<0.6	<0.6	<0.09	<0.6	<0.6	<0.6	<0.09	<0.6	<0.08	0.5	<0.03	<0.03	0.19	<0.03	0.2	0.14	0.11	<0.03	<0.03	<0.03	<0.03	<0.03	<0.03	<0.03
Dissolved iron	0.0047	0.98	0.5	0.42	0.43	0.37	0.39	0.6379	0.25	0.58	0.56	0.5218	0.38	0.63	0.83	1.241	2.749	1.835	1.938	1.312	1.37	0.7792	0.7899	0.2365	0.6817	0.6246	0.646	0.8452	
Dissolved copper	3	<9	<9	<9	<9	<9	<9	0.322	<9	<9	<9	2.819	<9	<1	3.2	<3	<3	<3	<3	<3	<3	<3	<3	<3	<3	<3	<3	<3	<3
Dissolved chromium	0.2	<2	<2	<2	<2	<2	<2	<0.68	<2	<2	<2	<0.68	<2	<1	6.5	<0.2	0.3	1	<0.2	<0.2	0.3	<0.2	0.5	<0.2	0.8	<0.2	<0.2	<0.2	<0.2
Chromium VI	2	<5	<5	<5	8	<5	<5	<5	<5	<5	<5	<5	<5	<20	<20	<2	<2	<2	<2	<2	<2	<2	<2	<2	<2	<2	<2	<2	<2
Chromium III	2	<30	<30	<30	<30	<30	<30	<30	<30	<30	<30	<30	<30	<20	<20	<2	<2	<2	<2	<2	<2	<2	<2	<2	<2	<2	<2	<2	<2
Dissolved nickel	0.2	<3	<3	<3	<3	<3	<3	0.649	<3	<3	<3	0.997	<3	<1	7.1	0.5	0.8	1.4	0.5	0.6	0.9	0.5	1.1	0.9	<0.2	<0.2	<0.2	<0.2	<0.2
Dissolved arsenic	0.9	<1	<1	<1	<1	1.2	<1	1.158	5	1.5	1.3	1.183	1.1	<1	1.2	2.4	5.4	<0.9	1.8	1.7	<0.9	<0.9	<0.9	<0.9	<0.9	1	<0.9	1.9	
Dissolved lead	0.4	<6	<6	<6	<6	<6	<6	<0.173	<6	<6	<6	<0.173	<6	<1	<1	2.4	<0.4	2.2	<0.4	2.1	<0.4	<0.4	<0.4	0.6	0.8	<0.4	<0.4	<0.4	
Total hardness as CaCO3	1	29.3	23.8	18.2	25.3	31	27.1	35	17.2	41.6	23	25	16.3	31	<15	27	21	36	43	30	41	16	18	22	18	21	29	47	
Visible oil or grease	N/A	-	-	-	-	-	-	-	-	-	-	-	-	-	-	-	-	-	-	-	-	-	-	-	-	-	-	-	-

Notes:
 pH values presented in pH units. Values in brackets are field pH measurements. Total Suspended Solids, Biochemical Oxygen Demand, Total hardness & Dissolved iron concentrations are presented in mg/L, all other parameters are in µg/L.
^a BOD over diluted, therefore result indicative only ^Δ Container with headspace

02/06/2016	04/07/2016	03/08/2016	06/09/2016	05/10/2016	03/11/2016	06/12/2016	18/01/2017	01/02/2017	20/03/2017	04/04/2017	09/05/2017	06/06/2017	06/07/2017	03/08/2017	05/09/2017	10/10/2017	14/11/2017	13/12/2017	10/01/2018	06/02/2018	07/03/2018	04/04/2018	03/05/2018	11/06/2018	09/07/2018	06/08/2018	05/09/2018	03/10/2018	06/11/2018	03/12/2018	10/01/2019	04/02/2019	
<10	<10	<10	<10	<10	<10	<10	<10	<10	10	<10	<10	<10	10	<10	<10	<10	<10	25	<10	<10	<10	<10	<10	<10	<10	<10	<10	<10	<10	<10	<10	18	
1	<1	1	1	<1	1	2	1	1	<1	2	1	1	2	<1	<1	<1	<1	<1	<1	<1	1	<1	<1	3	<1	<1	<1	3	<1	<1	<1	<1	
7.23 (7.89)	6.74 (7.27)	7.08 (7.25)	7.07 (7.25)	7.61 (7.07)	7.73 (7.21)	7.59 (7.20)	7.39 (6.52)	7.38 (6.71)	6.69 (7.06)	7.34 (7.19)	7.3 (7.59)	7.22 (6.84)	7.14 (6.94)	6.89 (6.33)	6.35 (6.5)	7.49 (6.51)	7.55 (7.01)	7.37 (6.75)	6.14 (6.77)	6.36 (7.58)	7.93 (7.6)	7.69 (7.12)	6.1 (6.97)	6.1 (7.57)	6.14 (7.73)	7.74 (7.6)	6.54 (7.54)	6.22 (7.6)	6.93 (6.59)	7.91 (6.63)	6.21 (7.19)	6.19 (6.14)	
<3	4	25	5	8	<3	<3	4	3.9	4	3	<1.5	4	3.6	7.3	3.6		5	2.7	2.2	7.3	<1.5	2.7	4.2	4.3	4.6	1.5	<1.5	3.3	3.4	7.3	9.4	5.1	7.5
<0.01	0.39	<0.01	<0.01	<0.01	<0.01	<0.5	<0.5	<0.01	<0.5	<0.5	<0.5	<0.5	<1	<1	<0.5	<0.01	<0.01	<0.5	<0.5	<0.5	<0.5	<0.5	<0.5	<0.5	<0.5	<0.5	<0.5	<0.5	<0.5	<0.5	<0.5	<0.5	
<0.03	<0.03	<0.03	<0.03	<0.03	<0.03	<0.03	<0.03	<0.03	<0.03	<0.03	<0.03	<0.03	<0.03	<0.03	<0.03	<0.03	<0.03	<0.03	<0.03	<0.03	<0.03	<0.03	<0.03	<0.03	<0.03	<0.03	<0.03	<0.03	<0.03	<0.03	<0.03	<0.03	
0.8637	0.97	1.596	1.553	1.797	1.34	1.051	0.6403	0.7023	0.6057	0.8926	0.533	0.8258	1.041	1.359	1.38	1.316	1.008	0.504	0.601	0.5692	0.4357	0.5564	0.7309	1.175	0.617	0.9438	1.522	0.8753	0.9387	0.7949	1.022	0.5089	
<3	<3	3	<3	<3	<3	<3	<3	<3	<3	<3	<3	<3	<3	<3	<3	<3	<3	<3	<3	<3	<3	<3	<3	<3	<3	<3	<3	<3	<3	<3	<3	<3	
<0.2	<0.2	<0.2	<0.2	<0.2	<0.2	0.4	0.2	<0.2	<0.2	<0.2	0.3	<0.2	0.3	<0.2	<0.2	0.3	<0.2	<0.2	<0.2	<0.2	<0.2	<0.2	<0.2	<0.2	<0.2	0.8	0.7	0.5	1.2	<0.2	<0.2	<0.2	<0.2
<2	<6	<6	<6	<6	<6	<6	<6	<6	<6	<6	<6	<6	NA	NA	<6	<6	<6	<6	<6	<6	<6	<6	<6	<6	<6	<6	<6	<6	<6	<6	<6	<6	
<2	<6	<6	<6	<6	<6	<6	<6	<6	<6	<6	<6	<6	<6	<6	<6	<6	<6	<6	<6	<6	<6	<6	<6	<6	<6	<6	<6	<6	<6	<6	<6	<6	
<0.2	<0.2	0.6	0.6	0.4	1.3	1	<0.2	0.7	<0.2	0.5	0.6	<0.2	0.9	<0.2	1.1	1.4	0.7	<0.2	<0.2	<0.2	<0.2	<0.2	<0.2	0.6	0.6	0.2	1.7	1.3	1.8	0.8	0.7	<0.2	1.4
<0.9	2.5	<0.9	4.7	1.6	2.9	3.4	<0.9	<0.9	<0.9	<0.9	<0.9	1.2	6.6	1.6	<0.9	1.5	<0.9	<0.9	<0.9	<0.9	<0.9	<0.9	2.3	<0.9	3.9	2	<0.9	<0.9	<0.9	<0.9	<0.9	<0.9	
<0.4	<0.4	<0.4	<0.4	<0.4	<0.4	1.5	<0.4	<0.4	<0.4	<0.4	<0.4	<0.4	<0.4	<0.4	<0.4	<0.4	<0.4	<0.4	<0.4	<0.4	<0.4	<0.4	<0.4	<0.4	<0.4	<0.4	<0.4	<0.4	<0.4	<0.4	<0.4	<0.4	
43	25	45	26	37	43	39	28	19	16	27	41	18	25	17	22	19	20	15	13	27	19	17	23	33	45	36	37	42	21	17	30	13	

04/07/2016	03/08/2016	06/09/2016	05/10/2016	03/11/2016	06/12/2016	18/01/2017	01/02/2017	20/03/2017	04/04/2017	09/05/2017	06/06/2017	06/07/2017	03/08/2017	05/09/2017	10/10/2017	14/11/2017	13/12/2017	10/01/2018	06/02/2018	07/03/2018	04/04/2018	03/05/2018	11/06/2018	09/07/2018	06/08/2018	05/09/2018	03/10/2018	06/11/2018	03/12/2018	10/01/2019	04/02/2019	
<10	<10	<10	<10	<10	<10	<10	<10	<10	<10	<10	14	<10	<10	<10	<10	<10	23	<10	<10	<10	<10	<10	<10	<10	<10	<10	<10	<10	<10	<10	<10	
1	1	1	<1	<1	2	2	<1	<1	1	1	1	2	<1	<1	<1	<1	<1	<1	<1	2	<1	<1	1	<1	<1	2	3	2	<1	<1	1	
6.94 (7.11)	7.08 (7.29)	7.1 (7.20)	7.63 (6.90)	7.97 (7.17)	6.96 (7.18)	7.3 (6.59)	6.19 (6.74)	6.64 (7.04)	6.72 (7.32)	6.54 (7.60)	6.33 (6.95)	6.49 (6.9)	6.71 (6.37)	6.52 (6.59)	6.33 (6.55)	6.58 (7.04)	4.24 (6.9)	6.15 (6.83)	6.38 (7.58)	6.27 (7.48)	6.35 (6.87)	6.16 (6.76)	6.18 (7.57)	6.2 (7.62)	6.28 (7.48)	6.42 (7.36)	6.19 (7.37)	6.97 (6.6)	6.13 (6.75)	6.26 (6.92)	6.12 (6.14)	
5	4	5	4	<3	<3	3	4.4	5	3.7	<1.5	6	5.2	8.9	3.6		5.3	2.9	2.7	5.7	4	2.9	8.5	4.2	3.2	2.5	3.2	3.1	5.4	38.9	32.2	5.4	8.9
<0.01	<0.01	0.06	<0.01	<0.01	<0.5	<0.5	<0.01	<0.5	<0.5	<0.5	<1	<1	<0.5	<0.01	<0.01	<0.5	<0.5	<0.5	<0.5	<0.5	<0.5	<0.5	<0.5	<0.5	<0.5	<0.5	<0.5	<0.5	<0.5	<0.5	<0.5	
<0.03	<0.03	<0.03	<0.03	<0.03	<0.03	<0.03	<0.03	<0.03	<0.03	<0.03	<0.03	<0.03	<0.03	<0.03	<0.03	<0.03	<0.03	<0.03	<0.03	<0.03	<0.03	<0.03	<0.03	<0.03	<0.03	<0.03	<0.03	<0.03	<0.03	<0.03	<0.03	<0.03
1.166	1.868	1.675	1.824	1.374	1.063	0.6517	0.6844	0.6228	0.8342	0.505	0.8812	1.069	1.381	1.308	1.321	1.02	0.4768	0.6217	0.552	0.431	0.5781	0.7646	1.176	0.6968	0.9051	1.469	0.9078	0.9421	0.8148	1.007	0.5107	
<3	<3	<3	<3	<3	<3	<3	<3	<3	<3	<3	<3	<3	<3	<3	<3	<3	<3	<3	<3	<3	<3	<3	<3	<3	<3	<3	<3	<3	<3	<3	<3	
0.6	<0.2	<0.2	0.3	0.5	<0.2	0.7	<0.2	0.3	<0.2	<0.2	0.4	0.8	<0.2	<0.2	0.5	<0.2	<0.2	<0.2	<0.2	<0.2	<0.2	<0.2	<0.2	<0.2	<0.2	0.3	<0.2	0.6	<0.2	<0.2	<0.2	
<6	<6	<6	<6	<6	<6	<6	<6	<6	<6	<6	NA	NA	<6	<6	<6	<6	<6	<6	<6	<6	<6	<6	<6	<6	<6	<6	<6	<6	<6	<6	<6	
<6	<6	<6	<6	<6	<6	<6	<6	<6	<6	<6	<6	<6	<6	<6	<6	<6	<6	<6	<6	<6	<6	<6	<6	<6	<6	<6	<6	<6	<6	<6	<6	
0.9	1.2	0.9	1.5	1	0.8	0.4	<0.2	<0.2	<0.2	0.5	0.8	<0.2	<0.2	1	1.6	0.2	<0.2	<0.2	<0.2	0.5	0.8	1.3	1.1	<0.2	1.6	1.2	<0.2	1.4	0.5	<0.2	1.6	
<0.9	<0.9	2.3	3.8	3.7	2.3	<0.9	<0.9	<0.9	<0.9	1.6	3	<0.9	2.1	2.2	2.8	<0.9	<0.9	<0.9	<0.9	<0.9	<0.9	<0.9	1.1	<0.9	1.4	1.8	<0.9	<0.9	<0.9	<0.9	<0.9	
<0.4	<0.4	<0.4	<0.4	<0.4	<0.4	<0.4	<0.4	<0.4	<0.4	<0.4	<0.4	<0.4	<0.4	<0.4	<0.4	<0.4	<0.4	<0.4	<0.4	<0.4	<0.4	<0.4	<0.4	<0.4	<0.4	<0.4	<0.4	<0.4	<0.4	<0.4	<0.4	
26	38	29	43	45	45	30	21	18	28	48	20	26	17	23	19	21	15	14	32	23	18	23	35	48	38	38	44	22	18	34	14	

Appendix B
Laboratory Results



Registered Office

[Redacted]

[Redacted]

[Redacted]

[Redacted]

[Redacted]

[Redacted]

[Redacted]

Dalradian Gold Ltd

[Redacted]

[Redacted]

[Redacted]

Tel: [Redacted]

Fax: [Redacted]



Attention : [Redacted]

Date : 18th December, 2018

Your reference : DCS/SW

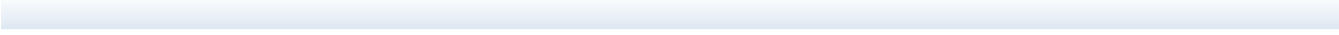
Our reference : Test Report 18/19597 Batch 1 18/19599 Batch 1

Location : Curraghinalt

Date samples received :

Status : Final report

Issue : 4



Compiled By:

[Redacted]

[Redacted] **BSc**
Project Manager

Client Name: Dalradian Gold Ltd
Reference: DCS/SW
Location: Curraghinalt
Contact:

Report : Liquid

Liquids/products: V=40ml vial, G=glass bottle, P=plastic bottle
 H=H₂SO₄, Z=ZnAc, N=NaOH, HN=HNO₃

Job No.	18/19599	18/19599	18/19599	18/19597	18/19597	18/19597	18/19599						
Sample No.	1-5	6-10	11-15	1-8	9-16	17-24	16-20						
Sample ID	DCS1	DCS2	DCS3	DCS4	DCS5	DCS6	DCS7						
Depth													
COC No / misc													
Containers	HN NB P BOD G	HN NB P BOD G	HN NB P BOD G	V H HN N NB P BOD G	V H HN N NB P BOD G	V H HN N NB P BOD G	HN NB P BOD G						
Sample Date	03/12/2018	03/12/2018	03/12/2018	03/12/2018	03/12/2018	03/12/2018	03/12/2018						
Sample Type	Surface Water	Surface Water	Surface Water	Surface Water	Surface Water	Surface Water	Surface Water						
Batch Number	1	1	1	1	1	1	1						
Date of Receipt	04/12/2018	04/12/2018	04/12/2018	04/12/2018	04/12/2018	04/12/2018	04/12/2018						
										LOD/LOR	Units	Method No.	
Dissolved Arsenic #	<0.9	<0.9	<0.9	<0.9	<0.9	<0.9	<0.9			<0.9	ug/l	TM30/PM14	
Dissolved Cadmium #	<0.03	<0.03	<0.03	<0.03	<0.03	<0.03	<0.03			<0.03	ug/l	TM30/PM14	
Total Dissolved Chromium #	<0.2	0.2	0.4	<0.2	<0.2	<0.2	<0.2			<0.2	ug/l	TM30/PM14	
Dissolved Copper #	<3	<3	<3	<3	<3	<3	<3			<3	ug/l	TM30/PM14	
Total Dissolved Iron #	1.0880	<0.0047	0.9809	0.7949	0.8148	<0.0047	0.0047			<0.0047	mg/l	TM30/PM14	
Dissolved Lead #	<0.4	<0.4	<0.4	<0.4	<0.4	<0.4	<0.4			<0.4	ug/l	TM30/PM14	
Dissolved Mercury #	<0.5	<0.5	<0.5	<0.5	<0.5	<0.5	<0.5			<0.5	ug/l	TM30/PM14	
Dissolved Nickel #	<0.2	4.3	0.9	0.7	0.5	<0.2	3.9			<0.2	ug/l	TM30/PM14	
Dissolved Zinc #	5.8	17.5	14.8	9.4	32.2	<1.5	17.2			<1.5	ug/l	TM30/PM14	
Total Hardness Dissolved (as CaCO ₃)	12	174	29	17	18	<1	177			<1	mg/l	TM30/PM14	
Hexavalent Chromium #	<6	<6	<6	<6	<6	<6	<6			<6	ug/l	TM38/PM0	
Total Dissolved Chromium III	<6	<6	<6	<6	<6	<6	<6			<6	ug/l	TM0/PM0	
BOD (Settled) #	<1	<1	<1	<1	<1	<1	<1			<1	mg/l	TM58/PM0	
pH #	6.10	7.72	7.71	7.91	6.13	5.34	8.11			<0.01	pH units	TM73/PM0	
Total Suspended Solids #	<10	<10	<10	<10	<10	<10	<10			<10	mg/l	TM37/PM0	

Please see attached notes for all abbreviations and acronyms

NOTES TO ACCOMPANY ALL SCHEDULES AND REPORTS

JE Job No.: 18/19597 18/19599

SOILS

Please note we are only MCERTS accredited (UK soils only) for sand, loam and clay and any other matrix is outside our scope of accreditation.

Where an MCERTS report has been requested, you will be notified within 48 hours of any samples that have been identified as being outside our MCERTS scope. As validation has been performed on clay, sand and loam, only samples that are predominantly these matrices, or combinations of them will be within our MCERTS scope. If samples are not one of a combination of the above matrices they will not be marked as MCERTS accredited.

It is assumed that you have taken representative samples on site and require analysis on a representative subsample. Stones will generally be included unless we are requested to remove them.

All samples will be discarded one month after the date of reporting, unless we are instructed to the contrary.

If you have not already done so, please send us a purchase order if this is required by your company.

Where appropriate please make sure that our detection limits are suitable for your needs, if they are not, please notify us immediately.

All analysis is reported on a dry weight basis unless stated otherwise. Results are not surrogate corrected. Samples are dried at 35°C ±5°C unless otherwise stated. Moisture content for CEN Leachate tests are dried at 105°C ±5°C.

Where Mineral Oil or Fats, Oils and Grease is quoted, this refers to Total Aliphatics C10-C40.

Where a CEN 10:1 ZERO Headspace VOC test has been carried out, a 10:1 ratio of water to wet (as received) soil has been used.

% Asbestos in Asbestos Containing Materials (ACMs) is determined by reference to HSG 264 The Survey Guide - Appendix 2 : ACMs in buildings listed in order of ease of fibre release.

Negative Neutralization Potential (NP) values are obtained when the volume of NaOH (0.1N) titrated (pH 8.3) is greater than the volume of HCl (1N) to reduce the pH of the sample to 2.0 - 2.5. Any negative NP values are corrected to 0.

The calculation of Pyrite content assumes that all oxidisable sulphides present in the sample are pyrite. This may not be the case. The calculation may be an overestimate when other sulphides such as Barite (Barium Sulphate) are present.

WATERS

Please note we are not a UK Drinking Water Inspectorate (DWI) Approved Laboratory .

ISO17025 accreditation applies to surface water and groundwater and usually one other matrix which is analysis specific, any other liquids are outside our scope of accreditation.

As surface waters require different sample preparation to groundwaters the laboratory must be informed of the water type when submitting samples.

Where Mineral Oil or Fats, Oils and Grease is quoted, this refers to Total Aliphatics C10-C40.

DEVIATING SAMPLES

Samples must be received in a condition appropriate to the requested analyses. All samples should be submitted to the laboratory in suitable containers with sufficient ice packs to sustain an appropriate temperature for the requested analysis. If this is not the case you will be informed and any test results that may be compromised highlighted on your deviating samples report.

SURROGATES

Surrogate compounds are added during the preparation process to monitor recovery of analytes. However low recovery in soils is often due to peat, clay or other organic rich matrices. For waters this can be due to oxidants, surfactants, organic rich sediments or remediation fluids. Acceptable limits for most organic methods are 70 - 130% and for VOCs are 50 - 150%. When surrogate recoveries are outside the performance criteria but the associated AQC passes this is assumed to be due to matrix effect. Results are not surrogate corrected.

DILUTIONS

A dilution suffix indicates a dilution has been performed and the reported result takes this into account. No further calculation is required.

BLANKS

Where analytes have been found in the blank, the sample will be treated in accordance with our laboratory procedure for dealing with contaminated blanks.

NOTE

Data is only reported if the laboratory is confident that the data is a true reflection of the samples analysed. Data is only reported as accredited when all the requirements of our Quality System have been met. In certain circumstances where all the requirements of the Quality System have not been met, for instance if the associated AQC has failed, the reason is fully investigated and documented. The sample data is then evaluated alongside the other quality control checks performed during analysis to determine its suitability. Following this evaluation, provided the sample results have not been effected, the data is reported but accreditation is removed. It is a UKAS requirement for data not reported as accredited to be considered indicative only, but this does not mean the data is not valid.

Where possible, and if requested, samples will be re-extracted and a revised report issued with accredited results. Please do not hesitate to contact the laboratory if further details are required of the circumstances which have led to the removal of accreditation.

REPORTS FROM THE ██████████ LABORATORY

Any method number not prefixed with SA has been undertaken in our UK laboratory unless reported as subcontracted.

Please include all sections of this report if it is reproduced

All solid results are expressed on a dry weight basis unless stated otherwise.

ABBREVIATIONS and ACRONYMS USED

#	ISO17025 (UKAS Ref No. 4225) accredited - UK.
SA	ISO17025 (SANAS Ref No.T0729) accredited - South Africa.
B	Indicates analyte found in associated method blank.
DR	Dilution required.
M	MCERTS accredited.
NA	Not applicable
NAD	No Asbestos Detected.
ND	None Detected (usually refers to VOC and/SVOC TICs).
NDP	No Determination Possible
SS	Calibrated against a single substance
SV	Surrogate recovery outside performance criteria. This may be due to a matrix effect.
W	Results expressed on as received basis.
+	AQC failure, accreditation has been removed from this result, if appropriate, see 'Note' on previous page.
++	Result outside calibration range, results should be considered as indicative only and are not accredited.
*	Analysis subcontracted to an [REDACTED] approved laboratory.
AD	Samples are dried at 35°C ±5°C
CO	Suspected carry over
LOD/LOR	Limit of Detection (Limit of Reporting) in line with ISO 17025 and MCERTS
ME	Matrix Effect
NFD	No Fibres Detected
BS	AQC Sample
LB	Blank Sample
N	Client Sample
TB	Trip Blank Sample
OC	Outside Calibration Range

Job No: 18/19597 18/19599

Test Method No.	Description	Prep Method No. (if appropriate)	Description	ISO 17025 (UKAS/S ANAS)	MCERTS (UK soils only)	Analysis done on As Received (AR) or Dried (AD)	Reported on dry weight basis
TM0	Not available	PM0	No preparation is required.				
TM5	Modified USEPA 8015B method for the determination of solvent Extractable Petroleum Hydrocarbons (EPH) with carbon banding within the range C8-C40 GC-FID.	PM30	Water samples are extracted with solvent using a magnetic stirrer to create a vortex.	Yes			
TM20	Modified BS 1377-3: 1990/USEPA 160.3 Gravimetric determination of Total Dissolved Solids/Total Solids	PM0	No preparation is required.	Yes			
TM30	Determination of Trace Metal elements by ICP-OES (Inductively Coupled Plasma - Optical Emission Spectrometry). Modified US EPA Method 200.7, 6010B and BS EN ISO 11885 2009	PM14	Analysis of waters and leachates for metals by ICP OES/ICP MS. Samples are filtered for dissolved metals and acidified if required.				
TM30	Determination of Trace Metal elements by ICP-OES (Inductively Coupled Plasma - Optical Emission Spectrometry). Modified US EPA Method 200.7, 6010B and BS EN ISO 11885 2009	PM14	Analysis of waters and leachates for metals by ICP OES/ICP MS. Samples are filtered for dissolved metals and acidified if required.	Yes			
TM37	Modified methods USEPA 160.2, EN872:2005 and SMWW 2540D. Gravimetric determination of Total Suspended Solids. Sample is filtered through a 1.5µm pore size glass fibre filter and the resulting residue is dried and weighed.	PM0	No preparation is required.	Yes			
TM38	Soluble Ion analysis using Discrete Analyser. Modified US EPA methods 325.2 (Chloride), 375.4 (Sulphate), 365.2 (o-Phosphate), 353.1 (TON), 354.1 (Nitrite), 350.1 (NH4+) comparable to BS ISO 15923-1, 7196A (Hex Cr)	PM0	No preparation is required.				
TM38	Soluble Ion analysis using Discrete Analyser. Modified US EPA methods 325.2 (Chloride), 375.4 (Sulphate), 365.2 (o-Phosphate), 353.1 (TON), 354.1 (Nitrite), 350.1 (NH4+) comparable to BS ISO 15923-1, 7196A (Hex Cr)	PM0	No preparation is required.	Yes			
TM57	Modified US EPA Method 410.4. Comparable with ISO 15705:2002. Chemical Oxygen Demand is determined by hot digestion with Potassium Dichromate and measured spectrophotometrically.	PM0	No preparation is required.	Yes			
TM58	APHA Standard Methods for the extraction of water and waste water (SMEWW) 5210B. Comparable with ISO 5815:1989. Measurement of Biochemical Oxygen Demand. When cBOD (Carbonaceous BOD) is requested a nitrification inhibitor is added which prevents the oxidation of reduced forms of nitrogen, such as ammonia, nitrite and organic nitrogen which exert a nitrogenous demand.	PM0	No preparation is required.	Yes			

Job No: 18/19597 18/19599

Test Method No.	Description	Prep Method No. (if appropriate)	Description	ISO 17025 (UKAS/S ANAS)	MCERTS (UK soils only)	Analysis done on As Received (AR) or Dried (AD)	Reported on dry weight basis
TM60	TC/TOC analysis of Waters by High Temperature Combustion followed by NDIR detection. Based on the following modified standard methods: USEPA 9060, APHA Standard Methods for Examination of Water and Wastewater 5310B, ASTM D 7573, and USEPA 415.1.	PM0	No preparation is required.	Yes			
TM61	Modified US EPA methods 245.7 and 200.7. Determination of Mercury by Cold Vapour Atomic Fluorescence.	PM0	No preparation is required.				
TM61	Modified US EPA methods 245.7 and 200.7. Determination of Mercury by Cold Vapour Atomic Fluorescence.	PM0	No preparation is required.	Yes			
TM73	Modified US EPA methods 150.1 and 9045D and BS1377:1990. Determination of pH by Metrohm automated probe analyser.	PM0	No preparation is required.	Yes			
TM75	Modified US EPA method 310.1. Determination of Alkalinity by Metrohm automated titration analyser.	PM0	No preparation is required.	Yes			
TM76	Modified US EPA method 120.1. Determination of Specific Conductance by Metrohm automated probe analyser.	PM0	No preparation is required.	Yes			
TM89	Modified USEPA method OIA-1667. Determination of cyanide by Flow Injection Analyser. Where WAD cyanides are required a Ligand displacement step is carried out before analysis.	PM0	No preparation is required.				
TM170	Determination of Trace Metal elements by ICP-MS (Inductively Coupled Plasma - Mass Spectrometry) modified USEPA 200.8/6020A and BS EN ISO 17294-2 2016	PM14	Analysis of waters and leachates for metals by ICP OES/ICP MS. Samples are filtered for dissolved metals and acidified if required.	Yes			
TM173	Analysis of fluoride by ISE (Ion Selective Electrode) using modified ISE method 340.2	PM0	No preparation is required.				



Registered Office

[Redacted]

[Redacted]

[Redacted]

[Redacted]

[Redacted]

[Redacted]

[Redacted]

Dalradian Gold Ltd

[Redacted]

[Redacted]

[Redacted]

Tel: [Redacted]

Fax: [Redacted]



Attention : [Redacted]

Date : 21st January, 2019

Your reference : DCS

Our reference : Test Report 19/404 Batch 1 19/394 Batch 1

Location : Curraghin halt

Date samples received :

Status : Final report

Issue : 2



Compiled By:

[Redacted]

[Redacted] **BSc**
Senior Project Manager

Client Name: Dalradian Gold Ltd
Reference: DCS
Location: Curraghin Halt
Contact: ██████████

Report : Liquid

Liquids/products: V=40ml vial, G=glass bottle, P=plastic bottle
 H=H₂SO₄, Z=ZnAc, N=NaOH, HN=HNO₃

Job No. Sample No. Sample ID Depth COC No / misc Containers Sample Date Sample Type Batch Number Date of Receipt	19/394	19/394	19/394	19/404	19/404	19/404	19/394						
	1-5	6-10	11-15	1-8	9-16	17-24	16-20						
	DCS1	DCS2	DCS3	DCS4	DCS5	DCS6	DCS7						
	HN NB P BOD G	HN NB P BOD G	HN NB P BOD G	V H HN N NB P BOD G	V H HN N NB P BOD G	V H HN N NB P BOD G	HN NB P BOD G						
	10/01/2019	10/01/2019	10/01/2019	10/01/2019	10/01/2019	10/01/2019	10/01/2019						
	Surface Water	Surface Water	Surface Water	Surface Water	Surface Water	Surface Water	Surface Water						
	1	1	1	1	1	1	1						
	11/01/2019	11/01/2019	11/01/2019	11/01/2019	11/01/2019	11/01/2019	11/01/2019						
								LOD/LOR	Units	Method No.			
Dissolved Arsenic #	3.4	<0.9	1.4	<0.9	<0.9	<0.9	1.0	<0.9	ug/l	TM30/PM14			
Dissolved Cadmium #	<0.03	<0.03	<0.03	<0.03	<0.03	<0.03	<0.03	<0.03	ug/l	TM30/PM14			
Total Dissolved Chromium #	<0.2	<0.2	<0.2	<0.2	<0.2	<0.2	<0.2	<0.2	ug/l	TM30/PM14			
Dissolved Copper #	<3	<3	<3	<3	<3	<3	<3	<3	ug/l	TM30/PM14			
Total Dissolved Iron #	1.7270	<0.0047	1.0770	1.0220	1.0070	<0.0047	<0.0047	<0.0047	mg/l	TM30/PM14			
Dissolved Lead #	<0.4	<0.4	<0.4	<0.4	<0.4	<0.4	<0.4	<0.4	ug/l	TM30/PM14			
Dissolved Mercury #	<0.5	<0.5	<0.5	<0.5	<0.5	<0.5	<0.5	<0.5	ug/l	TM30/PM14			
Dissolved Nickel #	0.6	4.4	2.6	<0.2	<0.2	<0.2	4.5	<0.2	ug/l	TM30/PM14			
Dissolved Zinc #	5.7	12.8	40.5	5.1	5.4	<1.5	11.4	<1.5	ug/l	TM30/PM14			
Total Hardness Dissolved (as CaCO3)	19	189	83	30	34	<1	187	<1	mg/l	TM30/PM14			
Hexavalent Chromium #	<6	<6	<6	<6	<6	<6	<6	<6	ug/l	TM38/PM0			
Total Dissolved Chromium III	<6	<6	<6	<6	<6	<6	<6	<6	ug/l	TM0/PM0			
BOD (Settled) #	<1	<1	<1	<1	<1	<1	<1	<1	mg/l	TM58/PM0			
pH #	7.45	7.11	7.79	6.21	6.26	5.66	7.77	<0.01	pH units	TM73/PM0			
Total Suspended Solids #	<10	<10	<10	<10	<10	<10	<10	<10	mg/l	TM37/PM0			

Please see attached notes for all abbreviations and acronyms

Notification of Deviating Samples

Client Name: Dalradian Gold Ltd
Reference: DCS
Location: Curraghin Halt
Contact: ██████████

Job No.	Batch	Sample ID	Depth	J E Sample No.	Analysis	Reason
No deviating sample report results for jobs 19/394,19/404						

Please note that only samples that are deviating are mentioned in this report. If no samples are listed it is because none were deviating. Only analyses which are accredited are recorded as deviating if set criteria are not met.

NOTES TO ACCOMPANY ALL SCHEDULES AND REPORTS

Job No.: 19/404 19/394

SOILS

Please note we are only MCERTS accredited (UK soils only) for sand, loam and clay and any other matrix is outside our scope of accreditation.

Where an MCERTS report has been requested, you will be notified within 48 hours of any samples that have been identified as being outside our MCERTS scope. As validation has been performed on clay, sand and loam, only samples that are predominantly these matrices, or combinations of them will be within our MCERTS scope. If samples are not one of a combination of the above matrices they will not be marked as MCERTS accredited.

It is assumed that you have taken representative samples on site and require analysis on a representative subsample. Stones will generally be included unless we are requested to remove them.

All samples will be discarded one month after the date of reporting, unless we are instructed to the contrary.

If you have not already done so, please send us a purchase order if this is required by your company.

Where appropriate please make sure that our detection limits are suitable for your needs, if they are not, please notify us immediately.

All analysis is reported on a dry weight basis unless stated otherwise. Results are not surrogate corrected. Samples are dried at 35°C ±5°C unless otherwise stated. Moisture content for CEN Leachate tests are dried at 105°C ±5°C.

Where Mineral Oil or Fats, Oils and Grease is quoted, this refers to Total Aliphatics C10-C40.

Where a CEN 10:1 ZERO Headspace VOC test has been carried out, a 10:1 ratio of water to wet (as received) soil has been used.

% Asbestos in Asbestos Containing Materials (ACMs) is determined by reference to HSG 264 The Survey Guide - Appendix 2 : ACMs in buildings listed in order of ease of fibre release.

Negative Neutralization Potential (NP) values are obtained when the volume of NaOH (0.1N) titrated (pH 8.3) is greater than the volume of HCl (1N) to reduce the pH of the sample to 2.0 - 2.5. Any negative NP values are corrected to 0.

The calculation of Pyrite content assumes that all oxidisable sulphides present in the sample are pyrite. This may not be the case. The calculation may be an overestimate when other sulphides such as Barite (Barium Sulphate) are present.

WATERS

Please note we are not a UK Drinking Water Inspectorate (DWI) Approved Laboratory .

ISO17025 accreditation applies to surface water and groundwater and usually one other matrix which is analysis specific, any other liquids are outside our scope of accreditation.

As surface waters require different sample preparation to groundwaters the laboratory must be informed of the water type when submitting samples.

Where Mineral Oil or Fats, Oils and Grease is quoted, this refers to Total Aliphatics C10-C40.

DEVIATING SAMPLES

Samples must be received in a condition appropriate to the requested analyses. All samples should be submitted to the laboratory in suitable containers with sufficient ice packs to sustain an appropriate temperature for the requested analysis. If this is not the case you will be informed and any test results that may be compromised highlighted on your deviating samples report.

SURROGATES

Surrogate compounds are added during the preparation process to monitor recovery of analytes. However low recovery in soils is often due to peat, clay or other organic rich matrices. For waters this can be due to oxidants, surfactants, organic rich sediments or remediation fluids. Acceptable limits for most organic methods are 70 - 130% and for VOCs are 50 - 150%. When surrogate recoveries are outside the performance criteria but the associated AQC passes this is assumed to be due to matrix effect. Results are not surrogate corrected.

DILUTIONS

A dilution suffix indicates a dilution has been performed and the reported result takes this into account. No further calculation is required.

BLANKS

Where analytes have been found in the blank, the sample will be treated in accordance with our laboratory procedure for dealing with contaminated blanks.

NOTE

Data is only reported if the laboratory is confident that the data is a true reflection of the samples analysed. Data is only reported as accredited when all the requirements of our Quality System have been met. In certain circumstances where all the requirements of the Quality System have not been met, for instance if the associated AQC has failed, the reason is fully investigated and documented. The sample data is then evaluated alongside the other quality control checks performed during analysis to determine its suitability. Following this evaluation, provided the sample results have not been effected, the data is reported but accreditation is removed. It is a UKAS requirement for data not reported as accredited to be considered indicative only, but this does not mean the data is not valid.

Where possible, and if requested, samples will be re-extracted and a revised report issued with accredited results. Please do not hesitate to contact the laboratory if further details are required of the circumstances which have led to the removal of accreditation.

REPORTS FROM THE [REDACTED] LABORATORY

Any method number not prefixed with SA has been undertaken in our UK laboratory unless reported as subcontracted.

Please include all sections of this report if it is reproduced

All solid results are expressed on a dry weight basis unless stated otherwise.

ABBREVIATIONS and ACRONYMS USED

#	ISO17025 (UKAS Ref No. 4225) accredited - UK.
SA	ISO17025 (SANAS Ref No.T0729) accredited - South Africa.
B	Indicates analyte found in associated method blank.
DR	Dilution required.
M	MCERTS accredited.
NA	Not applicable
NAD	No Asbestos Detected.
ND	None Detected (usually refers to VOC and/SVOC TICs).
NDP	No Determination Possible
SS	Calibrated against a single substance
SV	Surrogate recovery outside performance criteria. This may be due to a matrix effect.
W	Results expressed on as received basis.
+	AQC failure, accreditation has been removed from this result, if appropriate, see 'Note' on previous page.
++	Result outside calibration range, results should be considered as indicative only and are not accredited.
*	Analysis subcontracted to an [REDACTED] approved laboratory.
AD	Samples are dried at 35°C ±5°C
CO	Suspected carry over
LOD/LOR	Limit of Detection (Limit of Reporting) in line with ISO 17025 and MCERTS
ME	Matrix Effect
NFD	No Fibres Detected
BS	AQC Sample
LB	Blank Sample
N	Client Sample
TB	Trip Blank Sample
OC	Outside Calibration Range

Job No: 19/404 19/394

Test Method No.	Description	Prep Method No. (if appropriate)	Description	ISO 17025 (UKAS/ANAS)	MCERTS (UK soils only)	Analysis done on As Received (AR) or Dried (AD)	Reported on dry weight basis
TM0	Not available	PM0	No preparation is required.				
TM5	Modified USEPA 8015B method for the determination of solvent Extractable Petroleum Hydrocarbons (EPH) with carbon banding within the range C8-C40 GC-FID.	PM30	Water samples are extracted with solvent using a magnetic stirrer to create a vortex.	Yes			
TM20	Modified BS 1377-3: 1990/USEPA 160.3 Gravimetric determination of Total Dissolved Solids/Total Solids	PM0	No preparation is required.	Yes			
TM30	Determination of Trace Metal elements by ICP-OES (Inductively Coupled Plasma - Optical Emission Spectrometry). Modified US EPA Method 200.7, 6010B and BS EN ISO 11885 2009	PM14	Analysis of waters and leachates for metals by ICP OES/ICP MS. Samples are filtered for dissolved metals and acidified if required.				
TM30	Determination of Trace Metal elements by ICP-OES (Inductively Coupled Plasma - Optical Emission Spectrometry). Modified US EPA Method 200.7, 6010B and BS EN ISO 11885 2009	PM14	Analysis of waters and leachates for metals by ICP OES/ICP MS. Samples are filtered for dissolved metals and acidified if required.	Yes			
TM37	Modified methods USEPA 160.2, EN872:2005 and SMWW 2540D. Gravimetric determination of Total Suspended Solids. Sample is filtered through a 1.5µm pore size glass fibre filter and the resulting residue is dried and weighed.	PM0	No preparation is required.	Yes			
TM38	Soluble Ion analysis using Discrete Analyser. Modified US EPA methods 325.2 (Chloride), 375.4 (Sulphate), 365.2 (o-Phosphate), 353.1 (TON), 354.1 (Nitrite), 350.1 (NH4+) comparable to BS ISO 15923-1, 7196A (Hex Cr)	PM0	No preparation is required.				
TM38	Soluble Ion analysis using Discrete Analyser. Modified US EPA methods 325.2 (Chloride), 375.4 (Sulphate), 365.2 (o-Phosphate), 353.1 (TON), 354.1 (Nitrite), 350.1 (NH4+) comparable to BS ISO 15923-1, 7196A (Hex Cr)	PM0	No preparation is required.	Yes			
TM57	Modified US EPA Method 410.4. Comparable with ISO 15705:2002. Chemical Oxygen Demand is determined by hot digestion with Potassium Dichromate and measured spectrophotometrically.	PM0	No preparation is required.	Yes			
TM58	APHA Standard methods for the extraction of water and waste water (SMWW) 5210D. Comparable with ISO 5815:1989. Measurement of Biochemical Oxygen Demand. When cBOD (Carbonaceous BOD) is requested a nitrification inhibitor is added which prevents the oxidation of reduced forms of nitrogen, such as ammonia, nitrite and organic nitrogen which exert a nitrogenous demand. Determination of Dissolved Oxygen using the Hach	PM0	No preparation is required.	Yes			

Job No: 19/404 19/394

Test Method No.	Description	Prep Method No. (if appropriate)	Description	ISO 17025 (UKAS/S ANAS)	MCERTS (UK soils only)	Analysis done on As Received (AR) or Dried (AD)	Reported on dry weight basis
TM60	TC/TOC analysis of Waters by High Temperature Combustion followed by NDIR detection. Based on the following modified standard methods: USEPA 9060, APHA Standard Methods for Examination of Water and Wastewater 5310B, ASTM D 7573, and USEPA 415.1.	PM0	No preparation is required.	Yes			
TM61	Modified US EPA methods 245.7 and 200.7. Determination of Mercury by Cold Vapour Atomic Fluorescence.	PM0	No preparation is required.				
TM61	Modified US EPA methods 245.7 and 200.7. Determination of Mercury by Cold Vapour Atomic Fluorescence.	PM0	No preparation is required.	Yes			
TM73	Modified US EPA methods 150.1 and 9045D and BS1377:1990. Determination of pH by Metrohm automated probe analyser.	PM0	No preparation is required.	Yes			
TM75	Modified US EPA method 310.1. Determination of Alkalinity by Metrohm automated titration analyser.	PM0	No preparation is required.	Yes			
TM76	Modified US EPA method 120.1. Determination of Specific Conductance by Metrohm automated probe analyser.	PM0	No preparation is required.	Yes			
TM89	Modified USEPA method OIA-1667. Determination of cyanide by Flow Injection Analyser. Where WAD cyanides are required a Ligand displacement step is carried out before analysis.	PM0	No preparation is required.				
TM170	Determination of Trace Metal elements by ICP-MS (Inductively Coupled Plasma - Mass Spectrometry) modified USEPA 200.8/6020A and BS EN ISO 17294-2 2016	PM14	Analysis of waters and leachates for metals by ICP OES/ICP MS. Samples are filtered for dissolved metals and acidified if required.	Yes			
TM173	Analysis of fluoride by ISE (Ion Selective Electrode) using modified ISE method 340.2	PM0	No preparation is required.				



Registered Office: [Redacted]

[Redacted]

[Redacted]
[Redacted]
[Redacted]
[Redacted]
[Redacted]

Dalradian Gold Ltd

[Redacted]
[Redacted]
[Redacted]

Tel: [Redacted]
Fax: [Redacted]



Attention : [Redacted]

Date : 19th February, 2019

Your reference : DCS

Our reference : Test Report 19/1727 Batch 1 19/1738 Batch 1

Location : Curraghinalt

Date samples received :

Status : Final report

Issue : 3



Compiled By:

[Redacted]

[Redacted] **BSc**
Project Manager

Client Name: Dalradian Gold Ltd
Reference: DCS
Location: Curraghinalt
Contact:


Report : Liquid

Liquids/products: V=40ml vial, G=glass bottle, P=plastic bottle
 H=H₂SO₄, Z=ZnAc, N=NaOH, HN=HNO₃

Job No.	19/1738	19/1738	19/1738	19/1727	19/1727	19/1727	19/1738							
Sample No.	1-5	6-10	11-15	1-8	9-16	17-24	16-20							
Sample ID	DCS1	DCS2	DCS3	DCS4	DCS5	DCS6	DCS7							
Depth														
COC No / misc														
Containers	HN NB P BOD G	HN NB P BOD G	HN NB P BOD G	V H HN N NB P BOD G	V H HN N NB P BOD G	V H HN N NB P BOD G	HN NB P BOD G							
Sample Date	04/02/2019	04/02/2019	04/02/2019	04/02/2019	04/02/2019	04/02/2019	04/02/2019							
Sample Type	Surface Water	Surface Water	Surface Water	Surface Water	Surface Water	Surface Water	Surface Water							
Batch Number	1	1	1	1	1	1	1							
Date of Receipt	05/02/2019	05/02/2019	05/02/2019	05/02/2019	05/02/2019	05/02/2019	05/02/2019							
												LOD/LOR	Units	Method No.
Dissolved Arsenic #	1.9	3.4	1.6	<0.9	<0.9	<0.9	3.3					<0.9	ug/l	TM30/PM14
Dissolved Cadmium #	<0.03	<0.03	<0.03	<0.03	<0.03	<0.03	<0.03					<0.03	ug/l	TM30/PM14
Total Dissolved Chromium #	<0.2	<0.2	<0.2	<0.2	<0.2	<0.2	<0.2					<0.2	ug/l	TM30/PM14
Dissolved Copper #	<3	<3	<3	<3	<3	<3	<3					<3	ug/l	TM30/PM14
Total Dissolved Iron #	0.4519	<0.0047	0.4152	0.5089	0.5107	<0.0047	<0.0047					<0.0047	mg/l	TM30/PM14
Dissolved Lead #	<0.4	<0.4	<0.4	<0.4	<0.4	<0.4	<0.4					<0.4	ug/l	TM30/PM14
Dissolved Mercury #	<0.5	<0.5	<0.5	<0.5	<0.5	<0.5	<0.5					<0.5	ug/l	TM30/PM14
Dissolved Nickel #	<0.2	3.4	0.5	1.4	1.6	<0.2	3.5					<0.2	ug/l	TM30/PM14
Dissolved Zinc #	6.5	18.0	29.5	7.5	8.9	<1.5	34.8					<1.5	ug/l	TM30/PM14
Total Hardness Dissolved (as CaCO3)	9	176	28	13	14	<1	174					<1	mg/l	TM30/PM14
Hexavalent Chromium #	<6	<6	<6	<6	<6	<6	<6					<6	ug/l	TM38/PM0
Total Dissolved Chromium III	<6	<6	<6	<6	<6	<6	<6					<6	ug/l	TM0/PM0
BOD (Settled) #	<1	<1	1	<1	1	<1	<1					<1	mg/l	TM58/PM0
pH #	6.08	8.04	7.81	6.19	6.12	5.96	8.22					<0.01	pH units	TM73/PM0
Total Suspended Solids #	<10	<10	<10	18	<10	<10	<10					<10	mg/l	TM37/PM0

Please see attached notes for all abbreviations and acronyms



Client Name: Dalradian Gold Ltd
Reference: DCS
Location: Curraghinalt
Contact: 

Job No.	Batch	Sample ID	Depth	Sample No.	Analysis	Reason
No deviating sample report results for jobs 19/1727,19/1738						

Please note that only samples that are deviating are mentioned in this report. If no samples are listed it is because none were deviating. Only analyses which are accredited are recorded as deviating if set criteria are not met.

NOTES TO ACCOMPANY ALL SCHEDULES AND REPORTS

Job No.: 19/1727 19/1738

SOILS

Please note we are only MCERTS accredited (UK soils only) for sand, loam and clay and any other matrix is outside our scope of accreditation.

Where an MCERTS report has been requested, you will be notified within 48 hours of any samples that have been identified as being outside our MCERTS scope. As validation has been performed on clay, sand and loam, only samples that are predominantly these matrices, or combinations of them will be within our MCERTS scope. If samples are not one of a combination of the above matrices they will not be marked as MCERTS accredited.

It is assumed that you have taken representative samples on site and require analysis on a representative subsample. Stones will generally be included unless we are requested to remove them.

All samples will be discarded one month after the date of reporting, unless we are instructed to the contrary.

If you have not already done so, please send us a purchase order if this is required by your company.

Where appropriate please make sure that our detection limits are suitable for your needs, if they are not, please notify us immediately.

All analysis is reported on a dry weight basis unless stated otherwise. Results are not surrogate corrected. Samples are dried at 35°C ±5°C unless otherwise stated. Moisture content for CEN Leachate tests are dried at 105°C ±5°C.

Where Mineral Oil or Fats, Oils and Grease is quoted, this refers to Total Aliphatics C10-C40.

Where a CEN 10:1 ZERO Headspace VOC test has been carried out, a 10:1 ratio of water to wet (as received) soil has been used.

% Asbestos in Asbestos Containing Materials (ACMs) is determined by reference to HSG 264 The Survey Guide - Appendix 2 : ACMs in buildings listed in order of ease of fibre release.

Negative Neutralization Potential (NP) values are obtained when the volume of NaOH (0.1N) titrated (pH 8.3) is greater than the volume of HCl (1N) to reduce the pH of the sample to 2.0 - 2.5. Any negative NP values are corrected to 0.

The calculation of Pyrite content assumes that all oxidisable sulphides present in the sample are pyrite. This may not be the case. The calculation may be an overestimate when other sulphides such as Barite (Barium Sulphate) are present.

WATERS

Please note we are not a UK Drinking Water Inspectorate (DWI) Approved Laboratory .

ISO17025 accreditation applies to surface water and groundwater and usually one other matrix which is analysis specific, any other liquids are outside our scope of accreditation.

As surface waters require different sample preparation to groundwaters the laboratory must be informed of the water type when submitting samples.

Where Mineral Oil or Fats, Oils and Grease is quoted, this refers to Total Aliphatics C10-C40.

DEVIATING SAMPLES

Samples must be received in a condition appropriate to the requested analyses. All samples should be submitted to the laboratory in suitable containers with sufficient ice packs to sustain an appropriate temperature for the requested analysis. If this is not the case you will be informed and any test results that may be compromised highlighted on your deviating samples report.

SURROGATES

Surrogate compounds are added during the preparation process to monitor recovery of analytes. However low recovery in soils is often due to peat, clay or other organic rich matrices. For waters this can be due to oxidants, surfactants, organic rich sediments or remediation fluids. Acceptable limits for most organic methods are 70 - 130% and for VOCs are 50 - 150%. When surrogate recoveries are outside the performance criteria but the associated AQC passes this is assumed to be due to matrix effect. Results are not surrogate corrected.

DILUTIONS

A dilution suffix indicates a dilution has been performed and the reported result takes this into account. No further calculation is required.

BLANKS

Where analytes have been found in the blank, the sample will be treated in accordance with our laboratory procedure for dealing with contaminated blanks.

NOTE

Data is only reported if the laboratory is confident that the data is a true reflection of the samples analysed. Data is only reported as accredited when all the requirements of our Quality System have been met. In certain circumstances where all the requirements of the Quality System have not been met, for instance if the associated AQC has failed, the reason is fully investigated and documented. The sample data is then evaluated alongside the other quality control checks performed during analysis to determine its suitability. Following this evaluation, provided the sample results have not been effected, the data is reported but accreditation is removed. It is a UKAS requirement for data not reported as accredited to be considered indicative only, but this does not mean the data is not valid.

Where possible, and if requested, samples will be re-extracted and a revised report issued with accredited results. Please do not hesitate to contact the laboratory if further details are required of the circumstances which have led to the removal of accreditation.

REPORTS FROM THE [REDACTED] LABORATORY

Any method number not prefixed with SA has been undertaken in our UK laboratory unless reported as subcontracted.

Please include all sections of this report if it is reproduced

All solid results are expressed on a dry weight basis unless stated otherwise.

ABBREVIATIONS and ACRONYMS USED

#	ISO17025 (UKAS Ref No. 4225) accredited - UK.
SA	ISO17025 (SANAS Ref No.T0729) accredited - South Africa.
B	Indicates analyte found in associated method blank.
DR	Dilution required.
M	MCERTS accredited.
NA	Not applicable
NAD	No Asbestos Detected.
ND	None Detected (usually refers to VOC and/SVOC TICs).
NDP	No Determination Possible
SS	Calibrated against a single substance
SV	Surrogate recovery outside performance criteria. This may be due to a matrix effect.
W	Results expressed on as received basis.
+	AQC failure, accreditation has been removed from this result, if appropriate, see 'Note' on previous page.
++	Result outside calibration range, results should be considered as indicative only and are not accredited.
*	Analysis subcontracted to an [REDACTED] approved laboratory.
AD	Samples are dried at 35°C ±5°C
CO	Suspected carry over
LOD/LOR	Limit of Detection (Limit of Reporting) in line with ISO 17025 and MCERTS
ME	Matrix Effect
NFD	No Fibres Detected
BS	AQC Sample
LB	Blank Sample
N	Client Sample
TB	Trip Blank Sample
OC	Outside Calibration Range

Job No: 19/1727 19/1738

Test Method No.	Description	Prep Method No. (if appropriate)	Description	ISO 17025 (UKAS/S ANAS)	MCERTS (UK soils only)	Analysis done on As Received (AR) or Dried (AD)	Reported on dry weight basis
TM0	Not available	PM0	No preparation is required.				
TM5	Modified USEPA 8015B method for the determination of solvent Extractable Petroleum Hydrocarbons (EPH) with carbon banding within the range C8-C40 GC-FID.	PM30	Water samples are extracted with solvent using a magnetic stirrer to create a vortex.	Yes			
TM20	Modified BS 1377-3: 1990/USEPA 160.3 Gravimetric determination of Total Dissolved Solids/Total Solids	PM0	No preparation is required.	Yes			
TM30	Determination of Trace Metal elements by ICP-OES (Inductively Coupled Plasma - Optical Emission Spectrometry). Modified US EPA Method 200.7, 6010B and BS EN ISO 11885 2009	PM14	Analysis of waters and leachates for metals by ICP OES/ICP MS. Samples are filtered for dissolved metals and acidified if required.				
TM30	Determination of Trace Metal elements by ICP-OES (Inductively Coupled Plasma - Optical Emission Spectrometry). Modified US EPA Method 200.7, 6010B and BS EN ISO 11885 2009	PM14	Analysis of waters and leachates for metals by ICP OES/ICP MS. Samples are filtered for dissolved metals and acidified if required.	Yes			
TM37	Modified methods USEPA 160.2, EN872:2005 and SMWW 2540D. Gravimetric determination of Total Suspended Solids. Sample is filtered through a 1.5µm pore size glass fibre filter and the resulting residue is dried and weighed.	PM0	No preparation is required.	Yes			
TM38	Soluble Ion analysis using Discrete Analyser. Modified US EPA methods 325.2 (Chloride), 375.4 (Sulphate), 365.2 (o-Phosphate), 353.1 (TON), 354.1 (Nitrite), 350.1 (NH4+) comparable to BS ISO 15923-1, 7196A (Hex Cr)	PM0	No preparation is required.				
TM38	Soluble Ion analysis using Discrete Analyser. Modified US EPA methods 325.2 (Chloride), 375.4 (Sulphate), 365.2 (o-Phosphate), 353.1 (TON), 354.1 (Nitrite), 350.1 (NH4+) comparable to BS ISO 15923-1, 7196A (Hex Cr)	PM0	No preparation is required.	Yes			
TM57	Modified US EPA Method 410.4. Comparable with ISO 15705:2002. Chemical Oxygen Demand is determined by hot digestion with Potassium Dichromate and measured spectrophotometrically.	PM0	No preparation is required.	Yes			
TM58	APHA Standard methods for the extraction of water and waste water (SMWW) 5210B. Comparable with ISO 5815:1989. Measurement of Biochemical Oxygen Demand. When cBOD (Carbonaceous BOD) is requested a nitrification inhibitor is added which prevents the oxidation of reduced forms of nitrogen, such as ammonia, nitrite and organic nitrogen which exert a nitrogenous demand. Determination of Dissolved Oxygen using the Hach	PM0	No preparation is required.	Yes			

Job No: 19/1727 19/1738

Test Method No.	Description	Prep Method No. (if appropriate)	Description	ISO 17025 (UKAS/S ANAS)	MCERTS (UK soils only)	Analysis done on As Received (AR) or Dried (AD)	Reported on dry weight basis
TM60	TC/TOC analysis of Waters by High Temperature Combustion followed by NDIR detection. Based on the following modified standard methods: USEPA 9060, APHA Standard Methods for Examination of Water and Wastewater 5310B, ASTM D 7573, and USEPA 415.1.	PM0	No preparation is required.	Yes			
TM61	Modified US EPA methods 245.7 and 200.7. Determination of Mercury by Cold Vapour Atomic Fluorescence.	PM0	No preparation is required.				
TM61	Modified US EPA methods 245.7 and 200.7. Determination of Mercury by Cold Vapour Atomic Fluorescence.	PM0	No preparation is required.	Yes			
TM73	Modified US EPA methods 150.1 and 9045D and BS1377:1990. Determination of pH by Metrohm automated probe analyser.	PM0	No preparation is required.	Yes			
TM75	Modified US EPA method 310.1. Determination of Alkalinity by Metrohm automated titration analyser.	PM0	No preparation is required.	Yes			
TM76	Modified US EPA method 120.1. Determination of Specific Conductance by Metrohm automated probe analyser.	PM0	No preparation is required.	Yes			
TM89	Modified USEPA method OIA-1667. Determination of cyanide by Flow Injection Analyser. Where WAD cyanides are required a Ligand displacement step is carried out before analysis.	PM0	No preparation is required.				
TM170	Determination of Trace Metal elements by ICP-MS (Inductively Coupled Plasma - Mass Spectrometry) modified USEPA 200.8/6020A and BS EN ISO 17294-2 2016	PM14	Analysis of waters and leachates for metals by ICP OES/ICP MS. Samples are filtered for dissolved metals and acidified if required.	Yes			
TM173	Analysis of fluoride by ISE (Ion Selective Electrode) using modified ISE method 340.2	PM0	No preparation is required.				

Appendix C

YSI Professional Series Probe Calibration Certification

OUTWARDS CHECKLIST

YSIPRO Sales Checklist and Calibration

YSI & Cable Serial Numbers: 17L101825 / 17L100306

	Reading	Target	Acceptable	Pass
Temp	16.4	Ref: 16.5	± 1°C	✓
pH7mv	-1.9	0.0	0 ± 50	✓
pH4mv	169.0	177	177 ± 50	✓
pH Slope	170.9	177	162 - 180	✓
Cond. Cell Constant	4.9	5	4.6 - 5.4	✓
Redox Offset	5.0	0.0	±50.0	✓
DO Gain	Pass or fail determined by the meter			✓

*Calibrated to manufacturers standards

All parameters were within acceptable range on the day of despatch; however we do recommend that the instrument is calibrated daily to ensure accurate readings.

Checklist

Comments

- | | | |
|-------------------------------------|-------------------------------------|-------|
| <input checked="" type="checkbox"/> | YSI PRO meter & Hand strap | _____ |
| <input checked="" type="checkbox"/> | Quatro Cable Assy | _____ |
| <input checked="" type="checkbox"/> | Probe Guard / Sleeve | _____ |
| <input checked="" type="checkbox"/> | Calibration Cup | _____ |
| <input checked="" type="checkbox"/> | Manual/Data Manager CD | _____ |
| <input checked="" type="checkbox"/> | Quick Start Guide | _____ |
| <input checked="" type="checkbox"/> | Hard Case | N/A |
| <input checked="" type="checkbox"/> | Flow Cell (including 2 o-rings) | N/A |
| <input checked="" type="checkbox"/> | 2 x Small & Large Flow Cell Nipples | N/A |
| <input checked="" type="checkbox"/> | DO Membrane and Electrolyte kit | _____ |
| <input checked="" type="checkbox"/> | Warranty Sticker Intact | _____ |
| <input checked="" type="checkbox"/> | Maintenance Cleaning Kit | _____ |
| <input checked="" type="checkbox"/> | Cable Management Kit | _____ |

Signed: 

Date: 12/12/17

Name: 

Cross checked contents initials: 

OUTWARDS CHECKLIST

YSIPRO Calibration

YSI & Cable Serial Numbers: 15F100788 — 15D100374

	Reading	Target	Acceptable	Pass
Temp	15.6	Ref: 15.8	$\pm 1^{\circ}\text{C}$	✓
pH7mv	-6.8	0.0	0 ± 50	✓
pH4mv	164.8	177	177 ± 50	✓
pH Slope	171.6	177	162 - 180	✓
Cond. Cell Constant	4.9	5	4.6 - 5.4	✓
Redox Offset	5.7	0.0	± 50.0	✓
DO Gain	Pass or fail determined by the meter			✓

All parameters were within acceptable range on the day of despatch; however we do recommend that the instrument is calibrated daily to ensure accurate readings.

* Calibrated to manufacturers standards

Signature: 

Date: 8/1/18

Name: 

Cross checked contents initials: 

OUTWARDS CHECKLIST

YSIPRO Checklist and Calibration

YSI Serial Number 17L101825/17L100306

	Reading	Target	Acceptable	Pass
Temp	17.7	Ref: 17.7	$\pm 1^{\circ}\text{C}$	✓
pH7mv	-26.9	0.0	0 ± 50	✓
pH4mv	148.8	177	177 ± 50	✓
pH Slope	175.7	177	162 - 180	✓
Cond. Cell Constant	5.0	5	4.6 - 5.4	✓
Redox Offset	15.1	0.0	± 40.0	✓
DO Gain	Pass or fail determined by the meter			✓

All parameters were within acceptable range on the day of despatch; however we do recommend that the instrument is calibrated daily to ensure accurate readings.

Signed: 

11/01/19

Name: 